

# Newcastle University e-prints

---

**Date deposited:** 26 January 2010

**Version of file:** Author final

**Peer Review Status:** Peer reviewed

## Citation for published item:

Atherton KM; Williams FM; Gonzalez FJE; Glass R; Rushton S; Blain PG; Mutch E. [DNA damage in horticultural farmers: a pilot study showing an association with organophosphate pesticide exposure.](#) *BIOMARKERS* 2009,**14** 7 443-451.

## Further information on publisher website:

## Publishers copyright statement:

The definitive version of this article was published by Taylor & Francis, 2009, and should be used if you wish to cite the article:

<http://www.informaworld.com/>

---

## Use Policy:

The full-text may be used and/or reproduced and given to third parties in any format or medium, without prior permission or charge, for personal research or study, educational, or not for profit purposes provided that:

- A full bibliographic reference is made to the original source
- A link is made to the metadata record in DRO
- The full text is not change in any way.

The full-text must not be sold in any format or medium without the formal permission of the copyright holders.

**Robinson Library, University of Newcastle upon Tyne, Newcastle upon Tyne.  
NE1 7RU. Tel. 0191 222 6000**

**DNA damage in horticultural farmers: a pilot study showing an association with organophosphate pesticide exposure**

Kathryn M. Atherton<sup>1,2</sup>, Faith M. Williams<sup>1,2</sup>, Francisco J. Egea González<sup>3</sup>, Richard Glass<sup>4</sup>, Steve Rushton<sup>1</sup>, Peter G Blain<sup>2</sup> and Elaine Mutch<sup>1,2</sup>

<sup>1</sup>Institute for Research on Environment and Sustainability, Devonshire Building, Newcastle University, Newcastle upon Tyne, NE1 7RU. UK; <sup>2</sup>Medical Toxicology Centre, Wolfson Unit, Claremont Place, Newcastle upon Tyne, NE1 4HH, UK; <sup>3</sup>Department of Analytical Chemistry, University of Almería, Spain; <sup>4</sup>Central Science Laboratory, York ,UK.

**Corresponding author**

Dr Elaine Mutch ([elaine.mutch@ncl.ac.uk](mailto:elaine.mutch@ncl.ac.uk))

Tel: +44 (0)191 2464838

FAX: +44 (0)191 2464998

Institute for Research on Environment and Sustainability, Devonshire Building, Newcastle University, Newcastle upon Tyne, NE1 7RU. UK

## **Abstract**

A study of horticultural farmers exposed to organophosphate pesticides (OPs) and controls investigated the relationships between OP exposure, DNA damage and oxidative stress. Blood acetylcholinesterase (AChE) inhibition and urinary dialkylphosphate (DAP) levels determined exposure and 8-hydroxy-2'-deoxyguanosine (8OHdG) indicated oxidative stress status. The farmers had approximately 30% lower AChE activity and increased DAP levels compared to control, reflecting moderate OP exposure. They had higher DNA damage than control and there was a significant positive relationship between DAP and DNA damage with greater than 95% power. The farmers also had a significant positive relationship between urinary DAP and 8OHdG levels.

## **Financial support**

This research was supported by a project grant provided by DEFRA (VM02301)

## INTRODUCTION

Man is exposed to insecticide, fungicide, herbicide and biocide mixtures (collectively '*pesticides*') at low levels from environmental sources, including food and water, and, at higher levels, from occupational use. Although the acute toxicity of many of these chemicals is well recognised, being derived from studies of experimental animals and *in vitro* studies, extrapolation to man following chronic low level environmental exposure is problematic. For example, it is well known that the parent forms of organophosphate pesticides (OPs) are activated by the cytochromes P450 (CYPs) to oxon metabolites (Mutch and Williams, 2006) that have the ability to inhibit acetylcholinesterase (AChE) in the nervous system and at neuromuscular junctions to cause acute toxic effects. However, the effect of low-level exposure to OPs below the threshold to cause acute symptoms is far less well understood.

The widespread and increasing use of pesticides with poorly characterised long-term health risks has led to concern that some may be human toxins. Reports from the Agricultural Health Study, a large prospective cohort study of pesticide applicators in Iowa and North Carolina (USA) has added to the concern since it has shown positive associations between chronic exposure to several pesticides, including OPs, and various cancers (Alavanja et al, 2007). However, there has been criticism that these studies are of restricted value since the associations were made in the absence of pesticide exposure measurements. For example, although a recent study showed increased lymphocyte DNA damage in association with decreased plasma butyrylcholinesterase activity (a non-specific marker of OP exposure) in Brazilian farm workers exposed to pesticide mixtures, definitive exposure to OPs was not characterized (Remor et al, 2008).

In this study, DNA damage was determined in parallel with two measures of OP exposure, urinary dialkylphosphate (DAP) metabolites and blood AChE activity, to investigate whether a relationship between OP exposure and DNA damage does exist. The alkaline Comet assay determined 'background' DNA damage for male volunteers living in the UK with no occupational exposure to pesticides. DNA damage was then determined for male Spanish horticultural farmers in relation to both OP exposure and oxidative stress status, as indicated by urinary 8-hydroxy-2'-deoxyguanosine (8OHdG) levels. In parallel, OP exposure, oxidative stress and DNA damage was determined for a group of male volunteers living in the same region of Spain with no occupational exposure to pesticides.

## **MATERIALS**

Dimethylphosphate (DMP) and dimethylthiophosphate (DMTP) were obtained from Aldrich (Milwaukee, USA); diethylphosphate (DEP) and diethylthiophosphate (DETP) were purchased from Supelco (Bellefonte, USA). Lymphoprep was purchased from Axis-Shield (Oslo, Norway) and SYBR Gold from Molecular Probes (Leiden, Netherlands). The Comet Assay IV software was bought from Perceptive Instruments (Haverhill, Suffolk, UK).

## **METHODS**

### **DNA damage by the alkaline Comet method**

Immediately upon arrival of the blood samples from Spain, lymphocytes were isolated by centrifugation through lymphoprep and DNA damage was measured using the alkaline single cell gel electrophoresis (Comet) method of Collins et al (Collins and Dusinska, 2002). Each assay was carried out with a positive control (in duplicate)

consisting of lymphocytes treated with hydrogen peroxide (50 $\mu$ M) for 5 min at 37°C in humidified 5% CO<sub>2</sub>/ 95% air. Six blood samples (F2, F6, F7, F8, F9, F10) either had overcrowded lymphocyte preparations or were lost during lymphocyte isolation making it impossible to determine DNA damage in these samples.

Prior to visualisation of the DNA damage (Comets), dried down slides were re-hydrated in the dark for 30min in ice-cold PBS. Each slide was flooded with SYBR Gold diluted 1 in 10000 (v/v) in Tris/EDTA buffer (pH 7.4) for 10 min before the excess was removed. Slides were left to dry overnight in the dark at room temperature. Comets were visualised using a fluorescent microscope (x200 magnification) and DNA damage was quantified using an automated image analysis system (Comet Assay IV software). Fifty cells per parameter (25 cells per duplicate slide) were randomly selected and expressed as Olive Tail Moment (OTM) by the automated software. Tail moment, the chosen measure of DNA damage, is defined as the product of the percentage of DNA in the tail and the displacement between the head and tail mean centres. Highly damaged cells, with the visual appearance of hedgehogs, were assumed to be apoptotic/ necrotic and were excluded from analysis. In order to minimise assay variability, one experienced scientist (KMA) scored all the Comets. The Comets were assigned one of five pre-defined classes (0, 1, 2, 3, 4) on the basis of DNA damage expressed as OTM. Thus, class 0 (undamaged cells, 1-2 OTM), 1 (2-3 OTM), 2 (3-5 OTM), 3 (5-10 OTM) and 4 (very damaged cells, >10 OTM). The total damage score for 100 comets could therefore range from 0 (all undamaged) to 400 (all damaged) (Moretti et al, 1999). There was a significant positive relationship ( $p < 0.001$ ) between OTM and DNA damage score for the 53 subjects (**Figure 1**), as also reported by others (Lebailly et al, 1998).

### *Assay precision for measurement of DNA damage by the Comet method*

To determine the intra-assay coefficient of variation (CV) of the Comet method, the assay was performed four times on different dates using freshly harvested TK6 cells, a lymphoblastoid, non-adherent cell line that are a homogeneous population. The four mean OTM values (50 cells/ assay) from the four assays were averaged and expressed as  $0.564 \pm 0.041$  (mean $\pm$ SD). The intra-assay CV of the Comet method was therefore 7.3%.

### **Subjects**

Thirty-two young ( $33.5 \pm 9.0$  years, mean $\pm$ SD), non-smoking, males were recruited with local ethical committee approval (REC06/Q0905/152). The volunteers were staff or students working at Newcastle University, UK and had no occupational exposure OPs. This group established a range for 'background' DNA damage that was likely due to low-level exposure to environmental genotoxins, variable health status and anti-oxidant intake, amongst others. To evaluate intra-individual variation for DNA damage, five 'non-exposed' females working at Newcastle University volunteered to provide blood samples on three separate occasions between April and September for alkaline Comet analysis. The females were non-smokers and were aged  $41.8 \pm 14.4$  years (mean $\pm$ SD).

Seventeen young ( $35.5 \pm 8.2$  years, mean $\pm$ SD), healthy, male horticultural farmers that had worked with pesticide mixtures for at least two years were recruited in Almeria, Spain. A questionnaire and consent form was presented to the farmers by a Spanish speaking clinician who ascertained the age, medication intake, smoking status, level of alcohol consumption and general health of the individuals. None of the farmers reported poor health or any symptom associated with acute pesticide toxicity.

Six were smokers and eight non-smokers. Seven young ( $26.0\pm 4.8$  years, mean $\pm$ SD), healthy, males working at the University of Almeria and with no occupational exposure to OPs served as the Spanish control population. There were three smokers and four non-smokers. The controls, therefore, were matched as far as possible for age and smoking status since these parameters have been associated with increased DNA damage.

Twenty ml venous blood and 50 ml spot urine samples were obtained from the farmers and Spanish controls. The samples from both groups were sent to the UK and Spain by freight at 4°C and arrived within 48 hours. Preliminary experiments had shown that DNA damage and enzyme activities were not affected by this treatment (data not shown).

#### **Analysis of urine for dialkylphosphate metabolites (DAP)**

LAB S.L, Department of Analytical Chemistry, University of Almeria (Spain), carried out analysis of the urine samples for the four major dialkylphosphate metabolites (DAPs): (dimethylphosphate (DMP), dimethylthiophosphate (DMTP), diethylphosphate (DEP) and diethylthiophosphate (DETP). A Waters Acquity Ultraperformance Liquid Chromatograph (Waters, Milford, USA) was interfaced to a Quatro Premier XE 3Q Mass spectrometer (Micromass, Manchester, UK). Separation was carried out on an Acquity UPLC column (C18, 1.7  $\mu$ m 100 x 2.1 mm, Waters, Milford USA) using a linear gradient of acetonitrile and water in ammonium formate (2mM). The LC-MS-MS conditions (Multiple Reaction Monitoring) are given in **Table 1**. A capillary voltage of 3.0 kV was used in negative ionization mode. The interface temperature was set at 350 °C and the source at 120 °C.



The extraction procedure was based on a previously published method (Dularent et al, 2006). Briefly, 5 ml of urine was treated with 4 g of sodium chloride and 1 ml of hydrochloric acid (6 M). The mixture was extracted with 5 ml of diethyl ether and centrifuged at 3000 rpm for 5 min. The organic phase was collected and the extraction repeated with another 5 ml of ethyl acetate. Both extracts were combined and evaporated to dryness under nitrogen. The residue was reconstituted in 80  $\mu$ l of 2 mM ammonium formate/methanol (50:50, v/v) and a 5  $\mu$ l volume was injected onto the LC-MS-MS. The DAPs were extracted from urine with an efficiency of between 89% and 97 % and a relative standard deviation of less than 9%. The analytical limit of detection of the DAPs was in the range 0.6-1.1 ng/ml. The urine samples were also analysed for creatinine concentration and these values were used to normalise the urinary DAP levels between samples.

#### **Measurement of blood acetylcholinesterase (AChE) and butyrylcholinesterase (BuChE) activities**

Prior to transport from Spain to the UK, a 1 in 25 dilution was made by adding 40ul of whole blood collected in lithium heparin to 1ml buffered saponin solution (100mg saponin in 100ml 0.1M Phosphate buffer, pH 8). For AChE and BuChE analyses, 10ul of the diluted blood was incubated with 190ul phosphate buffer (pH 8) and 110ul DTNB solution (5'5-dithio-bis-2-nitrobenzoic acid, pH 7/ acetyl ( $\beta$ -methyl) thiocholine iodide or 5'5-dithio-bis-2-nitrobenzoic acid, pH 7/ butyrylthiocholine). The final concentrations of DTNB, acetyl ( $\beta$ -methyl) thiocholine and butyrylthiocholine were 0.5mM, 5mM and 7mM, respectively. The change in absorbance units was read every 30sec up to four minutes at 412nm and 37°C using a Multiskan plate reader, enabling the generation of a kinetic plot (positive slope).

Reduced glutathione standards (0-5.0 nmol/ well) were prepared in water and treated in the same manner as the samples. A reduced glutathione standard curve was used to quantify enzyme activity, i.e. liberation of thiocholine from the substrates by AChE or BuChE. The enzyme activities were expressed as  $\mu\text{mol/ml/min}$ .

### **Analysis of urine for 8-hydroxy-2'-deoxyguanosine (8OHdG)**

One ml of urine was diluted 1:1 with 0.01M HCl and internal standard, 8-bromo-2'-deoxyguanosine was added. This was applied to a HClX, mixed mode cation exchange SPE cartridge, previously conditioned with 1ml of methanol and 1ml of 0.01M HCl. After washing with 1ml of 0.01M HCl, analytes were eluted with 2ml of 95:5 methanol: ammonia which was then evaporated to dryness under a stream of dry nitrogen. This was reconstituted with 200 $\mu\text{l}$  of mobile phase, 80:20, 0.1% aqueous acetic acid: methanol, for LC-MS-MS analysis. Five  $\mu\text{l}$  volumes were injected onto the LC-MS-MS.

LC-MS-MS analysis was performed on a Quantum Discovery, Triple Quadrupole LC-MS-MS system, using positive electrospray ionisation and Selected Reactant Monitoring mode of detection. LC separation was achieved on a Sunfire C<sub>18</sub>, 100mm x 2.1mm x 3.5 $\mu\text{m}$  column using a linear gradient of methanol in formic acid (0.1%, v/v) and water in formic acid (0.1%, v/v). The LC-MS-MS conditions are given in **Table 2**. Positive ionization electrospray mode was used. The analytical limit of detection of 8OHdG was 10 pg/ml. The urine samples were also analysed for creatinine concentration and this was used to normalise the urinary 8OHdG levels between samples.

### **Statistical analysis**

Statistical comparison between DNA damage score, DAP concentration, 8OHdG concentration, AChE activity and BuChE activity for the farmers and the two control populations was determined by the nonparametric Mann-Whitney *U* test (two-tailed). Correlation analysis was by the Spearman test (two-tailed). Values of  $p < 0.05$  were considered to be significant.

## **RESULTS**

### **DNA damage in the study populations**

#### *Intra-individual variations in DNA damage*

The extent of variability in Comet DNA damage within an individual with time was determined for five control females on three separate occasions to assess intra-individual variations. The three DNA damage (OTM) values were averaged for each of the five females and expressed as mean $\pm$ SD which gave values of 1.02 $\pm$ 0.741, 0.977 $\pm$ 0.311, 1.55 $\pm$ 0.067, 0.866 $\pm$ 0.079 and 1.69 $\pm$ 1.02 with intra-individual coefficient of variations (CVs) of 73%, 32%, 4%, 9% and 63%, respectively. For comparison, the DNA damage was converted to damage score (mean $\pm$ SD), giving values of 33 $\pm$ 23, 16 $\pm$ 3.5, 20 $\pm$ 4.0, 8.0 $\pm$ 0.1 and 51 $\pm$ 43, respectively. Although the DNA damage was low for all five subjects, the mean $\pm$ sem intra-individual CV was 36.2% $\pm$ 13.9%, in keeping with the values reported by others (Holz et al, 1995; Pilger et al, 2001; Moller et al, 2000). The intra-individual variation in DNA damage would have been only minimally influenced by the precision of the method that had a CV of 7.3%.

#### *Horticultural farmers: comparison with UK and Spanish controls*

The horticultural farmers mostly worked inside plastic greenhouses and on the two occasions sampling took place (July and November, 2006) many of them had been using pesticides daily for several weeks. On both occasions, sampling took place during mid-morning on a Tuesday when it was known that pesticides had been used the previous day, and the same day in most cases, following the weekend break when pesticides were not used. The farmers did not wear protective clothing whether working inside or outside the greenhouses although gloves and respirators were available at some sites.

**Table 3** gives the age, smoking status, DNA damage scores, urinary dialkylphosphate (DAP) and 8-hydroxy-2'-deoxyguanosine (8OHdG) levels; AChE and BuChE activities of the farmers and control Spanish males. As a group, the farmers had used pesticides for  $8.9\pm 6.9$  years (mean $\pm$ SD). Three farmers provided blood samples at both the July (F4, F7 and F9) and November (F14, F13, F11) visits, respectively (**Table 3**). The DNA damage score (mean $\pm$ SD and range, median) for the farmers (n=14), Spanish controls (n=7) and UK controls (n=32) was  $79.2\pm 26.7$  (22-114, 81),  $50.0\pm 15.1$  (30-72, 48) and  $43.5\pm 23.4$  (3-127, 40.5), respectively. The farmers had significantly higher DNA damage than both the Spanish ( $p<0.05$ ) and UK controls ( $p<0.001$ ) (**Figure 2**).

### **Exposure to OPs: relationship with DNA damage**

The pesticide logbook information is given in **Table 4** and shows that in the weeks of the study, the farmers were exposed to three OPs (malathion, pirimiphos-methyl and chlorpyrifos) as well as other pesticide classes. The logbook showed that the farmers had been using pirimiphos-methyl (and imidacloprid) for about a week before and at the time of the July sampling, while in November they had been using pirimiphos-

methyl, malathion and chlorpyrifos (and imidacloprid, pyridaben and carbendazim) for about a week before and at the time of sampling. Although the pesticide logbook provided information about the pesticides used at the sampling periods, the farmers did not know which pesticides they were using and we could not obtain any information about which pesticides were used by which farmer and when.

The AChE activities of the farmers (n=17), Spanish controls (n=7) and UK controls (n=32) (mean±SD) were 3.11±0.39, 4.20±0.43 and 4.26±0.44 µmol/ml/min, respectively. Acetylcholinesterase activity was significantly (p<0.0001) lower for the farmers compared to both the Spanish and UK controls (**Figure 3**). As a group, the farmers' AChE activity was about 30% lower than both controls, indicating moderate OP exposure. As a group, plasma BuChE activity was similar for the farmers and the Spanish controls (**Table 3**).

Exposure to OPs was also measured by determining urinary dialkylphosphate (DAP) metabolite levels, which is a specific marker of these pesticides. The sum of the dimethyl-containing (DMP and DMTP) and diethyl-containing (DEP and DETP) urinary DAPs for the farmers as a group were 0.054±0.01 and 0.150±0.035 µmol/mmol creatinine (mean±sem), respectively. The Spanish controls had levels at the analytical limit of detection of the method (0.6-1.1 ng/ml). The diethyl- DAPs were present at higher levels (p<0.01) than the dimethyl-containing compounds. 'Total' urinary DAP levels (DMP + DMTP + DEP + DETP) was 0.204±0.02 µmol/mmol creatinine (mean±sem) for the farmers as a group and there was a significant (p<0.001) positive relationship between individual 'total' DAP levels and DNA damage score (**Figure 4**) and power analysis of this relationship showed it to be greater than 95%.

Comparison of the results across the two sampling periods showed that in July the farmers had moderate DMP + DMTP levels ( $0.06\pm 0.03$ , mean $\pm$ SD), presumably from pirimiphos-methyl exposure, but they also had high DEP + DETP levels ( $0.232\pm 0.19$ ). In November, when the farmers had been using pirimiphos-methyl, malathion and chlorpyrifos (and imidacloprid, pyridaben and carbendazim), DMP + DMTP ( $0.05\pm 0.03$ ) remained at moderate levels and DEP and DETP excretion ( $0.07\pm 0.05$ ) had greatly decreased compared to July. In July, when DEP+DETP levels were high, the median (range) DNA damage score for the farmers was 97.5 (92-108, n=4) compared to 68.0 (22-114, n=10) in November when the metabolite levels were much lower. This was significant at  $p<0.05$ .

The relationship between OP exposure and DNA damage was substantiated since there was a significant negative relationship between blood AChE activity and DNA damage score (**Figure 5**,  $p<0.02$ ) for the farmers as a group. Moreover, AChE activity was significantly ( $p<0.01$ ) lower for the farmers in July ( $2.86\pm 0.20$   $\mu\text{mol/ml/min}$ , mean $\pm$ SD) compared to November ( $3.35\pm 0.39$   $\mu\text{mol/ml/min}$ ). Although, as a group, plasma BuChE activity was similar for the farmers and both control groups, it was significantly lower ( $p<0.05$ ) when comparing activity in July ( $2.53\pm 0.20$   $\mu\text{mol/ml/min}$ , mean $\pm$ SD) with November ( $3.11\pm 0.56$   $\mu\text{mol/ml/min}$ ). The two biomarkers of OP exposure, blood AChE activity and urinary DAP concentration, had a significant negative relationship (**Figure 6**,  $p<0.05$ ). These associations make it likely that OP exposure strongly influenced the level of DNA damage.

### **Exposure to OPs: relationship with oxidative stress**

Urinary levels of 8-hydroxy-2'-deoxyguanosine (8OHdG) were determined as a biomarker of oxidative DNA damage and oxidative stress. There was a significant

( $p < 0.02$ ) relationship between OP exposure (total urinary DAP levels) and urinary 8OHdG levels for the farmers as a group (**Figure 7**). Urinary 8OHdG levels were higher ( $p < 0.01$ ) for the farmers ( $1.17 \pm 0.697$  pmol/mmol creatinine, mean $\pm$ SD) than the Spanish controls ( $0.515 \pm 0.314$  pmol/mmol creatinine). In July, when DEP+DETP levels were high, the median (range) 8OHdG level was 1.28 pmol/mmol creatinine (0.49-3.03,  $n=10$ ) compared to 0.59 pmol/mmol creatinine (0.45-1.50,  $n=6$ ) in November ( $p=0.06$ ) when the metabolite levels were much lower.

## **DISCUSSION**

Several studies have suggested that chronic, sub-acute exposure to OPs can cause DNA damage and adverse long-term health effects, although literature reports often conflict (Bolognesi, 2003). The inconsistency in the literature may reflect the type of worker investigated (farmers, pesticide applicators, floriculturists etc), the working practices of the workers (use of protective clothing, handling of pesticide concentrate), the pesticide mixtures used, the individuals' genetic make-up (metabolising and DNA repair enzymes etc) and/or the cytogenetic measurements utilised (including the robustness of the methodology), amongst others. The present study is important, even though the cohorts were small, because it is the first to show significant relationships between DNA damage and two measures of OP exposure (blood AChE activity and urinary DAP metabolite levels) in an occupational group.

We report that, as a group, the farmers had increased DNA damage and elevated oxidative stress at a time when blood AChE activity was lower than control by about thirty percent in parallel with raised urinary DAP levels. In support that OPs may cause DNA damage, AChE activity was lower in July, when diethyl metabolite levels were high, compared to November when they were much lower. Moreover,

although blood BuChE activity was not lower than control when looking at the farmers as a group, levels were lower in July compared to November. Butyrylcholinesterase is a less specific marker of OP exposure and expression varies widely within the healthy population due to genetic and environmental influences. Conversely, AChE is not influenced by genetics or diet making measurement of inhibition of this enzyme more useful for monitoring purposes (Mutch et al, 1992). The two enzymes have different capacities to bind to individual OPs, in particular chlorpyrifos is known to preferentially inhibit BuChE. Although only speculative at this stage, and contrary to the logbook information, it is likely that the farmers were exposed to relatively high levels of a diethyl-containing OP in July which influenced the DNA damage seen.

It is possible that factors other than OP exposure influenced the DNA damage and elevated oxidative stress seen for the farmers. Smoking has often, but not always, been identified as a confounder of DNA damage and oxidative stress (Zhu et al, 1999; Grover et al, 2003; Muniz et al, 2007) and this study indicated that, for similar OP exposure levels, the farmers that smoked tended to have higher oxidative stress and DNA damage compared to the non-smokers. As expected, since none of the farmers was older than 47 years, age did not confound the DNA damage.

At the time of the study, the logbook showed that the farmers were exposed to the OPs malathion, pirimiphos-methyl and chlorpyrifos, as well as other pesticide classes. Of note, the farmers used carbendazim which has been shown to be an indirect genotoxin, but it does not cause DNA strand breaks that could be measured by the Comet assay (Vigreux et al, 1998). None of the pesticides used by the farmers, other than the OPs, had chemical structures enabling inhibition of AChE or production of DAP metabolites and therefore exposure to the non-OP pesticides



would be unlikely to have influenced the relationships seen between OP exposure and DNA damage.

Many of the biomonitoring studies to date have been hampered by a lack of exposure information to the pesticides used. For example, although a study of workers manufacturing various OPs as well as other pesticides had higher DNA damage levels than controls using the Comet method, internal dose exposure was not determined (Grover et al, 2003). In another study of pesticide manufacturers (OPs and other pesticide classes), Comet DNA damage was increased in the workers after daily exposure to the compounds for six months and, although damage levels had decreased, they remained above control at six months after cessation of the work, but exposure was not determined (Garaj-Vrhovac and Zeljezic, 2000).

In the present study, urinary 8OHdG was determined as an indicator of oxidative stress, reactive oxygen species (ROS) formation and oxidative injury to the body. All ROS have the potential to react with cellular components, including DNA bases and the deoxyribosyl backbone of DNA, to produce damaged bases and/or strand breaks, some of which are pro-mutagenic (Lunec et al, 2002). Urinary 8OHdG levels were higher for the farmers than the Spanish controls and there was a positive association between urinary 8OHdG and DAP levels, suggesting that OP exposure increased the oxidative stress. In support that OPs may cause DNA damage by increasing oxidative stress, 8OHdG levels were higher in July than November, although this did not reach statistical significance. A previous study of eighteen pesticide applicators that were mainly exposed to OPs also reported a positive relationship between urinary 8OHdG and DAP levels, although DNA damage was not measured (Lee et al, 2007). Another small study that did investigate DNA damage (Comet method) in parallel with DAP metabolites, found increased DNA damage for

nine farmers and ten pesticide applicators that were believed to be primarily exposed to the OPs azinphos-methyl and chlorpyrifos compared to nine controls (Muniz et al, 2007). The methyl-containing DAPs were higher in the occupational groups than the controls but, in contrast with our study, Muniz et al did not see a significant relationship between urinary DAP and 8OHdG levels.

It has been reported that the OP malathion inhibited mitochondrial respiratory chain activity in the hippocampus of rats exposed to low concentrations of this OP which lead to increased oxidative stress (Delgado et al, 2006). The Delgado study is of importance to the present one because malathion was used by the farmers and his research appears to support that exposure to this OP can cause increased oxidative stress. Our research group have also shown that, at no more than 30% brain AChE inhibition, the OPs malathion, diazinon and parathion caused DNA damage to the hepatocytes (and lymphocytes in some cases) of rats dosed i.p. (Atherton et al, 2008). An alternative mechanism for the DNA damage seen in the rats and the farmers could therefore involve increased oxidative stress following hepatic metabolism of OPs by the CYP isoforms, since this is known to increase ROS formation (Imaoka et al, 2004).

In conclusion, this study of horticultural farmers occupationally exposed to pesticide mixtures has shown positive relationships between OP exposure and both increased DNA damage and oxidative stress. These data advance this important area of research however, since the cohorts were small, the findings should be regarded as preliminary and warrant further investigation.

## **Acknowledgements**

This research was supported by a project grant provided by DEFRA (VM02301). We are grateful to Dr Mick Dunn, Medical Toxicology Centre, Newcastle University who carried out the urinary 8OHdG analysis and to Ms Samantha Jameson for technical support.

## References

- Alavanja MC, Ward MH, Reynolds P., 2007. Carcinogenicity of agricultural pesticides in adults and children. *J Agromedicine* 12: 39-56
- Atherton KM, Williams FM, Jameson S, Mutch E., 2008. DNA damage by single doses of five organophosphate pesticides to rats. *Toxicology* 253: 8-9.
- Bolognesi C., 2003. Genotoxicity of pesticides: A review of human biomonitoring studies. *Mut Res* 543: 251-272
- Collins AR and Dusinska M., 2002. Oxidation of cellular DNA measured with the Comet assay. In Armstrong D. (Ed), *Methods in Molecular Biology*, vol 186, *Oxidative Stress Biomarkers and Antioxidant Protocols* Humana Press, Totowa, NJ, pp 147-159
- Delgado EHB, Streck EL, Quevedo JL, Dal-Pizzol F., 2006. Mitochondrial respiratory dysfunction and oxidative stress after chronic malathion exposure. *Neurochem Res* 31: 1021-1025
- Dulaurent S, Gaulier JM, Marquet P, Lachatre G., 2006. Simultaneous determination of six dialkylphosphates in urine by liquid chromatography tandem mass spectrometry. *Journal Chromatog B Analyt Technol Biomed Life Sci* 831: 223-229
- Garaj-Vrhovac V and Zeljezic D., 2000. Evaluation of DNA damage in workers occupationally exposed to pesticides using single cell gel electrophoresis (SCGE) assay: Pesticide genotoxicity revealed by Comet assay. *Mut Res* 469: 279-285
- Grover P, Danadevi K, Mahboob M, Rozati R et al., 2003. Evaluation of genetic damage in workers employed in pesticide production utilizing the Comet assay. *Mutagenesis* 18: 201-205

Holz O, Jorres R, Kastner A, Magnussen H., 1995. Reproducibility of basal and induced DNA single-strand breaks detected by the single cell gel electrophoresis assay in human peripheral mononuclear leukocytes. *Int Arch Occup Environ Health* 67: 305-310

Imaoka S, Osada M, Minamiyama Y, Yukimura T et al., 2004. Role of phenobarbital-inducible cytochrome P450s as a source of active oxygen species in DNA-oxidation. *Cancer Lett* 203: 117-125

Lebailly P, Vigreux C, Lechevrel C, Ledemeny D et al., 1998. DNA damage in mononuclear leukocytes of farmers measured using the alkaline Comet assay: Discussion of critical parameters and evaluation of seasonal variations in relation to pesticide exposure. *Cancer Epidemiol Biomark Prev* 7: 917-927

Lee C-H, Kamijima M, Kim H, Shibata E et al., 2007. 8-Hydroxyguanosine levels in human leukocyte and urine according to exposure to organophosphorus pesticides and paraoxonase 1 genotype. *Int Arch Occup Environ Health* 80: 217-227

Lunec J, Holloway KA, Cooke MS, Faux S et al., 2002. Urinary 8-oxo-2'-deoxyguanosine: Redox regulation of DNA repair in vivo? *Free Rad Biol Med* 33: 875-885

Moller P, Knudsen LE, Loft S, Wallin H., 2000. The Comet assay as a rapid test in biomonitoring occupational exposure to DNA-damaging agents and effect of confounding factors. *Cancer Epidemiol Biomark Prev* 9: 1005-1015

Moretti M, Villarini M, Scassellati-Sforzolini G, Monarca S et al., 1999. Application of the Comet assay to the detection of primary DNA damage in workers of the rubber industry: comparison of manual and computerized analysis. *Tox Environ Chem* 72: 13-24

- Muniz JF, McCauley L, Scherer J, Lasarev M et al., 2007. Biomarkers of oxidative stress and DNA damage in agricultural workers: A pilot study. *Tox Appl Pharmacol* 227: 97-107
- Mutch E, Blain PG, Williams FM., 1992. Interindividual variations in enzymes controlling organophosphate toxicity in man. *Hum Exp Toxicol* 11: 109-116.
- Mutch E and Williams Faith M., 2006. Diazinon, chlorpyrifos and parathion are metabolised by multiple cytochromes P450 in human liver. *Toxicology* 224: 22-32.
- Pilger A, Germadnik D, Riedel K, Merger-Kossien I et al., 2001. Longitudinal study of urinary 8-hydroxy-2-deoxyguanosine excretion in healthy adults. *Free Rad Res* 35: 273-280
- Remor AP, Totti CC, Moreira DA, Dutra GP et al, 2008. Occupational exposure of farm workers to pesticides: Biochemical parameters and evaluation of genotoxicity. *Envir Int* (doi:10.1016/j.envint.2008.06.011)
- Vigreux C, Poul JM, Deslandes E, Lebailly P, et al., 1998. DNA damaging effects of pesticides measured by the single cell gel electrophoresis assay (Comet assay) and the chromosomal aberration test, in CHOK1 cells. *Mut Res* 419: 79-90
- Zhu CQ, Lam TH, Jiang CQ, Wei BX et al., 1999. Lymphocyte DNA damage in cigarette factory workers measured by the Comet assay. *Mut Res* 444: 1-6

## **Figure Legends**

### **Figure 1**

The correlation between lymphocyte DNA damage evaluated as Olive tail moment (OTM) and damage score (arbitrary units). Individual values are the mean of fifty cells evaluated for DNA damage by the Comet method.

There was a significant ( $p < 0.001$ ) positive relationship between OTM and DNA damage score for the 53 subjects comprising farmers ( $n=14$ ), Spanish controls ( $n=7$ ) and UK controls ( $n=32$ ).

### **Figure 2**

DNA damage scores for lymphocytes obtained from UK controls ( $n=32$ ), farmers ( $n=14$ ) and Spanish controls. Individual values are the mean of fifty cells evaluated for DNA damage by the Comet method.

The farmers had significantly higher DNA damage than both the UK controls ( $p < 0.001$ ) and Spanish controls ( $p < 0.05$ ) (Mann Whitney *U* test).

### **Figure 3**

Acetylcholinesterase (AChE) activity ( $\mu\text{mol}/\text{min}/\text{ml}$ ) for blood samples obtained from UK controls ( $n=32$ ), farmers ( $n=20$ ) and Spanish controls ( $n=7$ ). Taken as a group, the farmers' AChE activity was about 30% lower than both control groups, indicating moderate OP exposure.

AChE activity was significantly ( $p < 0.0001$ ) lower for the farmers compared to both the Spanish and UK controls (Mann Whitney *U* test).

### **Figure 4**

The correlation between lymphocyte DNA damage score and urinary total dialkylphosphate (DAP) metabolite levels ( $\mu\text{mol}/\text{mmol}$  creatinine) for fourteen farmers. Individual values for DNA damage are the mean of fifty cells evaluated for

DNA damage by the Comet method. Total dialkylphosphate metabolites is the sum of dimethyl-phosphate (DMP), dimethyl-thiophosphate (DMTP), diethyl-phosphate (DEP) and diethyl-thiophosphate (DETP).

There was a significant ( $p < 0.001$ ) positive relationship between DAP levels and DNA damage scores with  $>95\%$  power.

### **Figure 5**

The correlation between lymphocyte DNA damage score and blood acetylcholinesterase (AChE) activity ( $\mu\text{mol}/\text{min}/\text{ml}$ ) for fourteen farmers. Individual values for DNA damage are the mean of fifty cells evaluated for DNA damage by the Comet method.

There was a significant ( $p < 0.02$ ) negative relationship between DNA damage score and blood AChE activity.

### **Figure 6**

The correlation between urinary total dialkylphosphate (DAP) metabolite levels ( $\mu\text{mol}/\text{mmol}$  creatinine) and blood acetylcholinesterase (AChE) activity ( $\mu\text{mol}/\text{min}/\text{ml}$ ) for twenty farmers. Total dialkylphosphate (DAP) metabolites is the sum of dimethyl-phosphate (DMP), dimethyl-thiophosphate (DMTP), diethyl-phosphate (DEP) and diethyl-thiophosphate (DETP).

There was a significant ( $p < 0.05$ ) negative relationship between DAP levels and blood AChE activity.

### **Figure 7**

The correlation between urinary total dialkylphosphate (DAP) metabolite levels ( $\mu\text{mol}/\text{mmol}$  creatinine) and urinary 8-hydroxy-2'-deoxyguanosine (8OHdG) levels ( $\text{pmol}/\text{mmol}$  creatinine) for sixteen farmers. Total dialkylphosphate (DAP)



metabolites is the sum of dimethyl-phosphate (DMP), dimethyl-thiophosphate (DMTP), diethyl-phosphate (DEP) and diethyl-thiophosphate (DETP).

There was a significant ( $p < 0.02$ ) positive relationship between urinary DAP metabolite levels and urinary 8OHdG levels.

Figure 1 (Atherton et al)

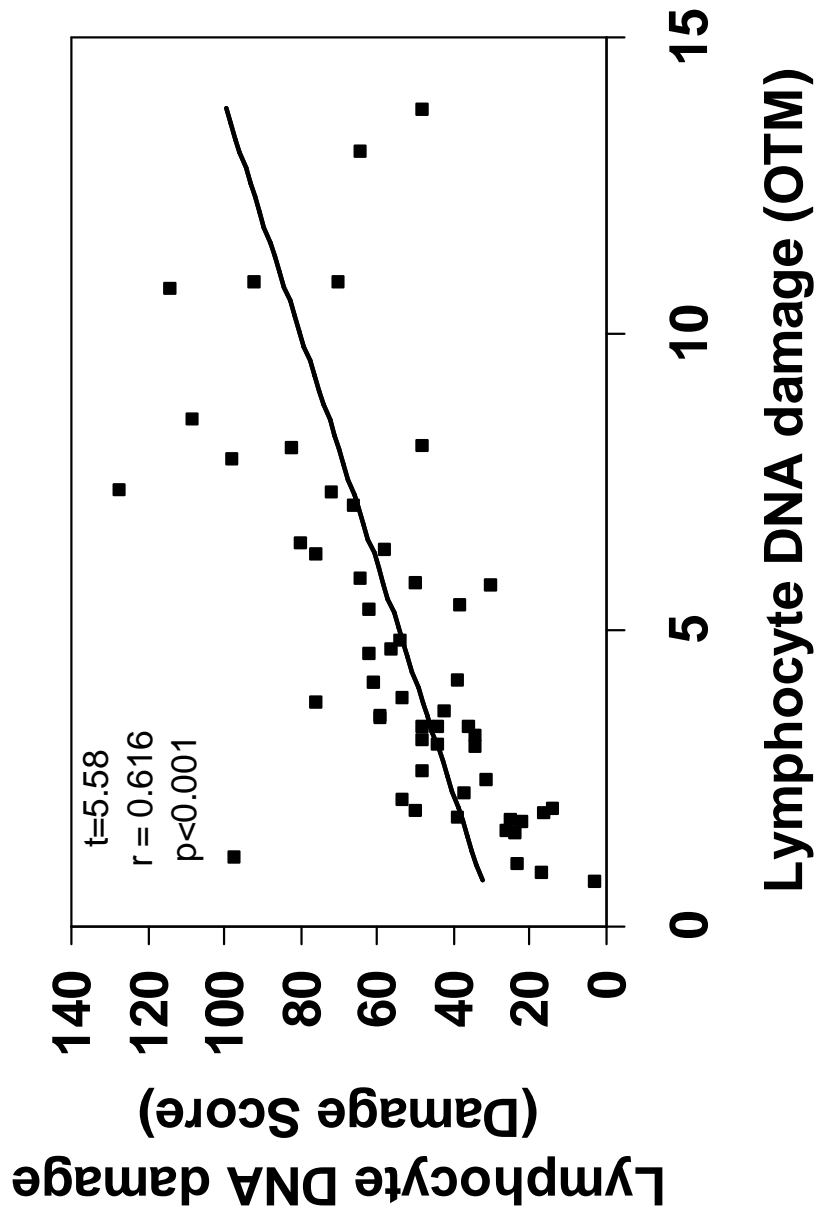
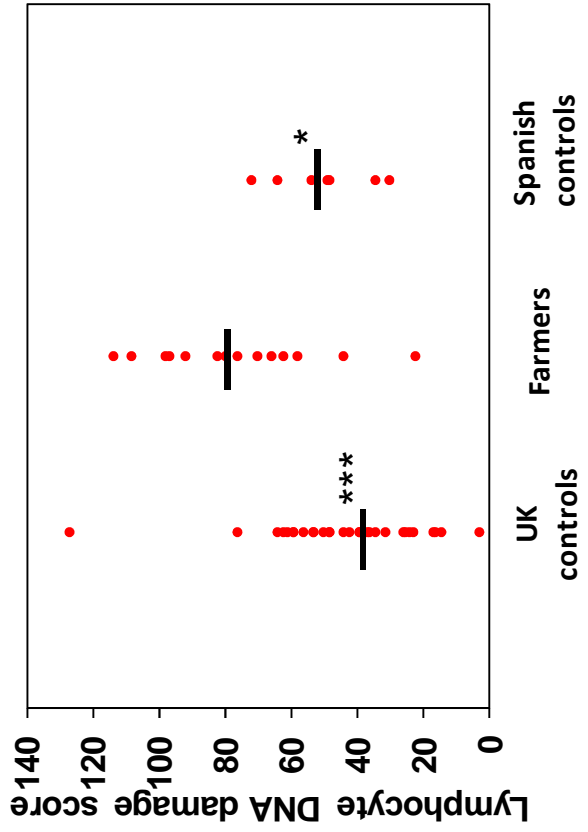


Figure 2 (Atherton et al)





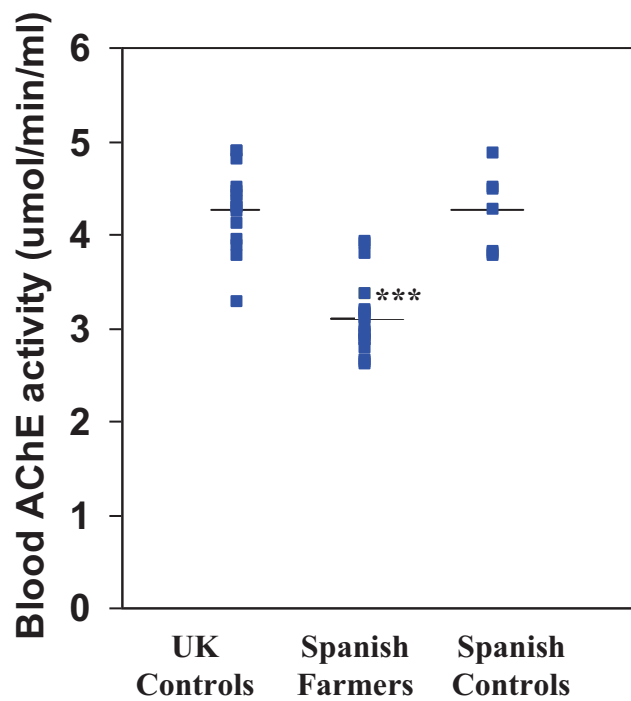


Figure 4 (Atherton et al)

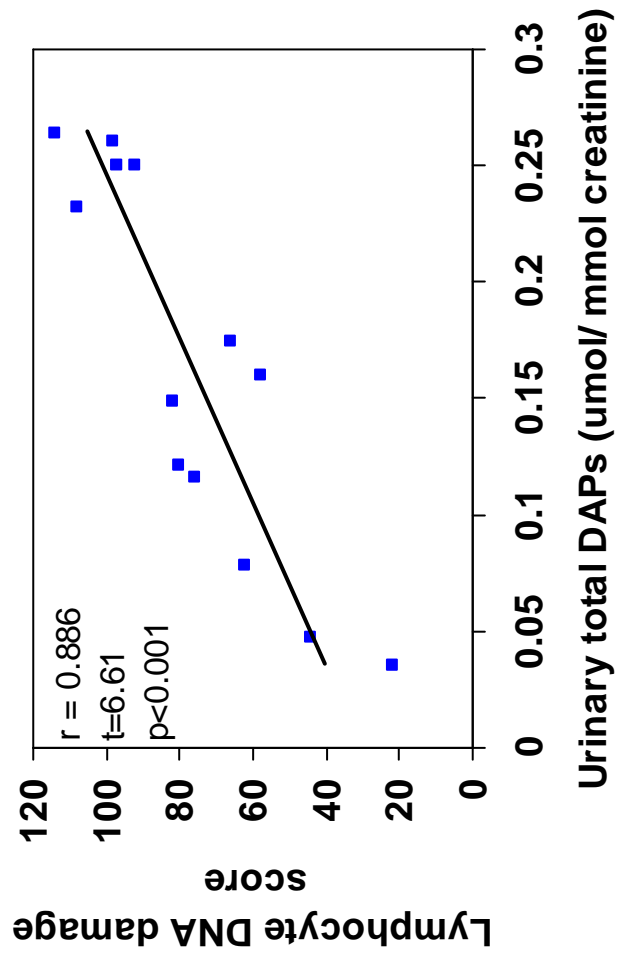


Figure 5 (Atherton et al)

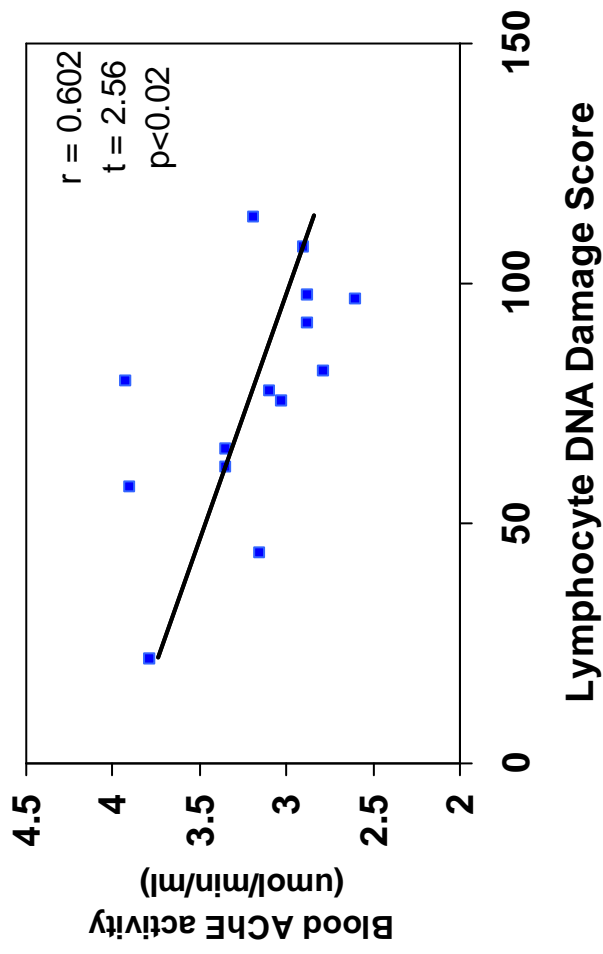


Figure 6 (Atherton et al)

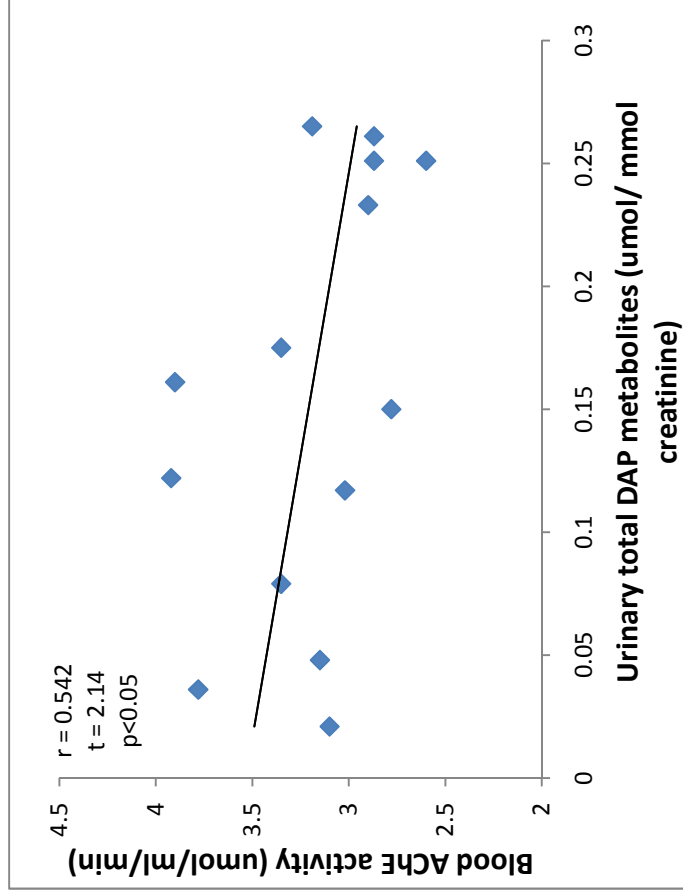




Figure 7 (Atherton et al)

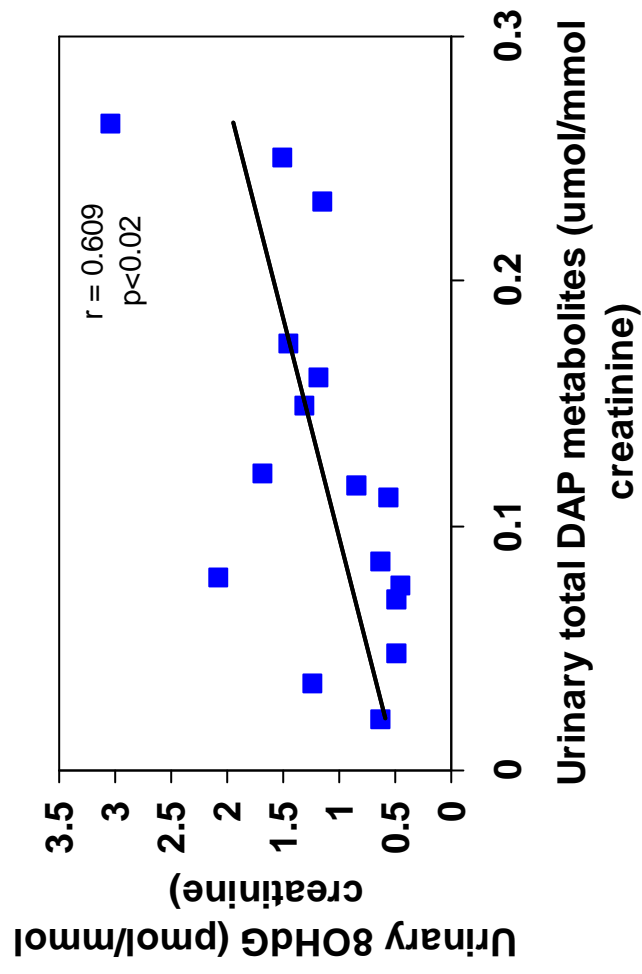
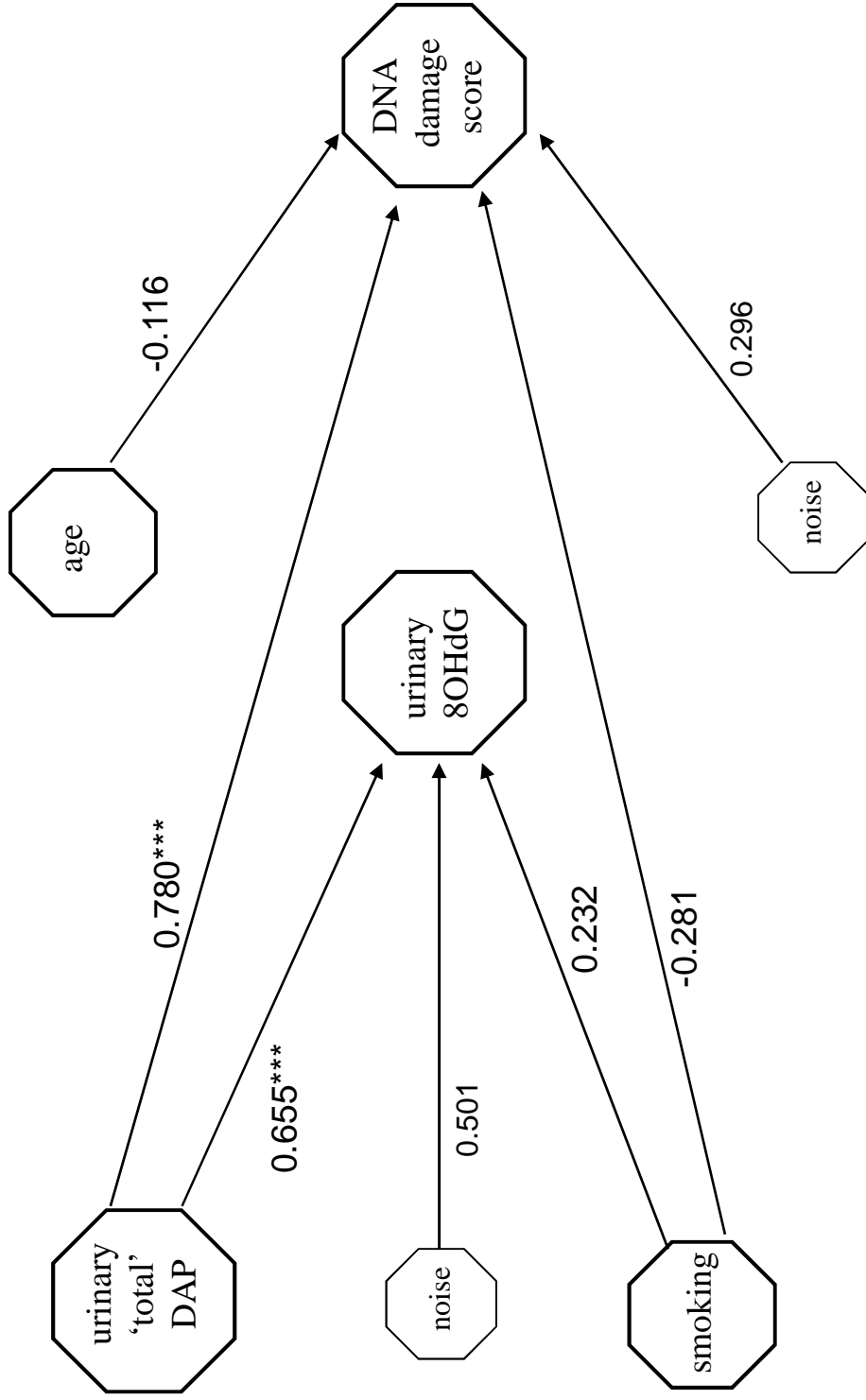


Figure 8 (Atherton et al)



\*\*\*p<0.001

**Table 1.** LC-MS-MS conditions for measurement of the four dialkylphosphate (DAP) metabolites: dimethylphosphate (DMP), dimethylthiophosphate (DMTP), diethylthiophosphate (DETP) and diethylphosphate (DEP).

DAP	Retention Time (min)	Precursor ion (m/z)	Declustering potential (V)	Type of transition	Collision energy (V)	Product ion (m/z)	Q/C ratio
DMP	4.07	124.9	-51	Quantification	-28	79.0	2.10
				Confirmatory	-22	63.1	
DMTP	4.23	140.9	-36	Quantification	-20	125.8	1.86
				Confirmatory	-26	96.0	
DETP	4.44	168.9	-41	Quantification	-24	95	1.22
				Confirmatory	-14	141	
DEP	4.75	152.9	-31	Quantification	-22	79.1	2.28
				Confirmatory	-16	124.8	

**Table 2.** Selected reaction monitoring conditions for measurement of urinary 8-hydroxy-2'-deoxyguanosine (8OHdG) by LC-MS-MS.

<u>Compound</u>	<u>Precursor m/z</u>	<u>Product m/z</u>	<u>Collision Energy/V</u>	<u>Dwell Time /msec</u>
8-hydroxy-2'-deoxyguanosine	284.092	168.054	13	10
		140.048	29	10
		112.032	35	10
2'-5N <sup>15</sup> - deoxyguanosine	273.082	156.977	12	10
Internal Standard		138.955	33	10
		112.956	33	10

**Table 3.** Characteristics of the farmers (F1-F20)\* and control Spanish males (C1-C7), including age, pesticide use, smoking status, DNA damage score, urinary 8-hydroxy-2'-deoxyguanosine (8OHdG) concentration, urinary dialkylphosphate concentrations (DMTP+DMP and DETP+DEP), blood acetylcholinesterase activity (AChE) and blood butyrylcholinesterase activity (BuChE).

I.D.	Age (yr)	Pesticide use (yrs)	Last used pesticides (days ago)	Smoke	DNA damage score	8OH-dG	DMTP+DMP	DETP+DEP	AChE	BuChE
F1	41	16	7	NS	108	0.63	0.063	0.170	2.90	3.77
F2	32	8	?	S	n/a	0.49	0.042	0.070	2.62	2.27
F3	30	6	?	S	98	1.24	0.082	0.179	2.87	2.86
F4	46	20	?	NS	92	1.18	0.113	0.138	2.87	2.60
F5	20	8	>50	S	97	1.67	0.055	0.196	2.60	3.25
F6	47	4	7	NS	n/a	0.83	0.089	0.141	2.92	2.32
F7	38	1-2	4	S	n/a	3.03	0.081	0.184	2.94	1.76
F8	33	16	Today	NS	n/a	2.08	0.025	0.091	2.65	2.30
F9	34	16	21	NS	n/a	1.45	0.034	0.520	3.17	1.98
F10	37	20	21	NS	n/a	1.31	0.013	0.630	3.13	2.16
F11	34	17	Today	NS	70	1.14	0.008	0.013	3.10	2.78
F12	25	1-2	Today	NS	44	0.55	0.007	0.041	3.15	2.48
F13	38	2	Today	S	22	n/a	0.030	0.006	3.78	3.78
F14	46	20	Today	NS	58	1.50	0.089	0.072	3.90	4.01
F15	47	1-2	30	NS	80	n/a	0.052	0.070	3.92	2.34
F16	29	1-2	>50	S	76	n/a	0.060	0.057	3.02	3.00
F17	21	6	Today	S	114	0.48	0.081	0.184	3.19	3.18
F18	30	1-2	>50	NS	62	n/a	0.038	0.041	3.35	3.02
F19	43	16	Today	NS	66	0.63	0.055	0.120	3.35	3.69
F20	43	4	Today	NS	82	0.45	0.071	0.079	2.78	2.82
C1	30	0	-	NS	30	0.31	--	--	4.85	3.32
C2	28	0	-	NS	64	0.40	--	--	3.80	3.90
C3	33	0	-	NS	54	0.44	--	--	4.26	2.69
C4	19	0	-	S	34	n/a	--	--	3.76	3.10
C5	22	0	-	S	72	1.07	--	--	3.77	3.58
C6	25	0	-	NS	48	0.36	--	--	4.48	3.42
C7	28	0	-	S	48	n/a	--	--	4.50	3.00

\* Three farmers provided blood samples at both the July (F4, F7 and F9) and November (F14, F13, F11) visits, respectively

n/a = not available

-- = values were at the analytical limit of detection of the method

? = couldn't remember when last used pesticides

The units of expression are:

urinary 8OHdG (pmol/mmol creatinine)

urinary dialkylphosphates ( $\mu$ mol/mmol creatinine) [DMTP = dimethylthiophosphate,

DMP = dimethylphosphate, DETP = diethylthiophosphate, DEP = diethylphosphate]

blood AChE and BuChE ( $\mu$ mol/ml/min).

**Table 4**

Pesticides used by the horticultural farmers in Spain between 22<sup>nd</sup> May and 10<sup>th</sup> November, 2006.

<b>Pesticide Type</b>	<b>Common Name</b>	<b>IARC</b>	<b>EPA</b>	<b>WHO</b>
<b>Fungicides</b>	Azoxystrobin	NL	E	U
	Carbendazim	NL	C	U
	Pyrimethanil	NL	E	U
	Procymidone	NL	B2	U
<b>Insecticides</b>	Imidacloprid	NL	E	II
	Malathion	3	C	III
	Pirimiphos-methyl	NL	UC	III
	Chlorpyrifos	NL	E	II
	Buprofectin	NL	NL	NL
	Pyridaben	NL	E	III
	Pyriproxifen	NL	NL	NL

**IARC** (2003) classification of carcinogenicity to humans: 3 = not classifiable; NL = not listed

**EPA** classification of carcinogenicity to humans: C = possible; B2 = probable; UC = unclassifiable; E = unlikely; NL = not listed

**WHO** classification of acute hazard to humans: II = moderately; III = slightly; U = unlikely; NL = not listed