

Thompson M, Hunt B, Smith A, Joyce TJ. [Wear Tests of a Potential Biolubricant for Orthopedic Biopolymers](#). *Lubricants* 2015, 3(2), 80-90.

**Copyright:**

© 1996-2015 MDPI AG. This article is published with open access.

**DOI link to article:**

<http://dx.doi.org/10.3390/lubricants3020080>

**Date deposited:**

26/10/2015



This work is licensed under a [Creative Commons Attribution 4.0 International License](#)

Article

## Wear Tests of a Potential Biolubricant for Orthopedic Biopolymers

Martin Thompson <sup>1</sup>, Ben Hunt <sup>1</sup>, Alan Smith <sup>2</sup> and Thomas Joyce <sup>1,\*</sup>

<sup>1</sup> School of Mechanical and Systems Engineering, Newcastle University, Claremont Road, Newcastle upon Tyne NE1 7RU, UK; E-Mails: M.Thompson2@newcastle.ac.uk (M.T.); B.J.Hunt1@newcastle.ac.uk (B.H.)

<sup>2</sup> School of Applied Sciences, University of Huddersfield, Queensgate, Huddersfield HD1 3DH, UK; E-Mail: a.m.smith@hud.ac.uk

\* Author to whom correspondence should be addressed; E-Mail: Thomas.joyce@ncl.ac.uk; Tel.: +44-191-208-6214; Fax: +44-191-222-8600.

Academic Editors: Amir Kamali and J. Philippe Kretzer

Received: 16 January 2015 / Accepted: 5 March 2015 / Published: 25 March 2015

---

**Abstract:** Most wear testing of orthopedic implant materials is undertaken with dilute bovine serum used as the lubricant. However, dilute bovine serum is different to the synovial fluid in which natural and artificial joints must operate. As part of a search for a lubricant which more closely resembles synovial fluid, a lubricant based on a mixture of sodium alginate and gellan gum, and which aimed to match the rheology of synovial fluid, was produced. It was employed in a wear test of ultra high molecular weight polyethylene pins rubbing against a metallic counterface. The test rig applied multidirectional motion to the test pins and had previously been shown to reproduce clinically relevant wear factors for ultra high molecular weight polyethylene. After 2.4 million cycles (125 km) of sliding in the presence of the new lubricant, a mean wear factor of  $0.099 \times 10^{-6} \text{ mm}^3/\text{Nm}$  was measured for the ultra high molecular weight polyethylene pins. This was over an order of magnitude less than when bovine serum was used as a lubricant. In addition, there was evidence of a transfer film on the test plates. Such transfer films are not seen clinically. The search for a lubricant more closely matching synovial fluid continues.

**Keywords:** biolubricant; ultra high molecular weight polyethylene; wear testing; pin-on-plate; orthopedic; alginate; gellan gum

---

## 1. Introduction

Total joint replacement is a relatively common and generally very successful procedure. Data from the largest joint registry in the world, the National Joint Registry for England, Wales and Northern Ireland, reports that in the last year for which data is available, 2012–13, over 80,000 hip prostheses and 85,000 knee prostheses were implanted in these countries [1]. The registry also states that, at 10 years follow up, the revision rate for cemented hips and cemented knees was only 3.20% and 3.33% respectively, thus indicating the long term success of the vast preponderance of these implants [1]. The majority of these hip and knee prostheses consist of a hard metal or ceramic component which articulates against a polyethylene counterface. However, a small number of these implants do need to be revised and in the majority of cases this is due to wear induced osteolysis [2,3]. Here the polyethylene wear debris provokes a negative cascade of events within the body eventually leading to osteolysis and a revision operation. Therefore the issue of wear is a long-term problem in joint replacements.

As such it is essential both to understand and to minimize the wear processes taking place, and tribological studies have been widely undertaken to study the wear of polyethylene and other orthopedic biopolymers *in vitro*. A key element in such testing has been the appropriate choice of lubricant [4].

Dilute bovine serum is currently recommended as the lubricant for wear testing orthopedic biopolymers [5–7]. This is because: it results in clinically relevant wear rates; it prevents the formation of a transfer film (and such transfer films are not seen on explanted joints); and it results in wear debris which matches the size and shape of polyethylene wear debris seen *in vivo* [4,8]. However there are recognized issues with this lubricant including batch to batch variation, cost and safety [4]. As a biological material it also needs to be changed regularly and this will likely remove wear particles which can influence the tribological performance. For these and other reasons, comparing wear results between different labs can be problematic. Moreover, while it can be fascinating from a tribological view to investigate the constituents of bovine serum and their effect on wear performance, it must also be accepted that bovine serum lacks key elements which exist within synovial fluid and are known to influence the tribology of joints. Likewise it should be self-evident that it is not bovine serum but synovial fluid in which artificial joints must operate [4]. The ideal would be to have a biolubricant which is safe, relatively inexpensive, mimics the properties of synovial fluid and which does not need to be replaced at frequent intervals. The current paper is one contribution towards this overall ideal.

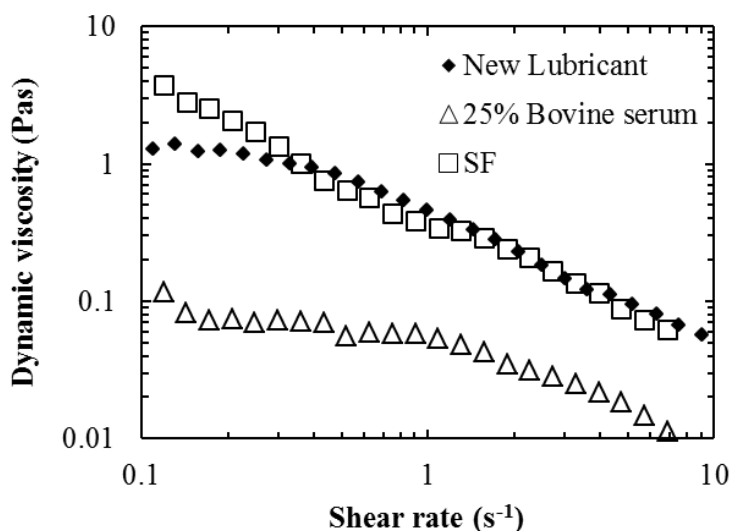
For all of these reasons alternative lubricants have been sought and tested [9]. To add to this body of data a new lubricant was investigated which has been shown to mimic certain rheological properties of synovial fluid [10]. Wear tests were undertaken in a screening wear tester which had previously been shown to produce clinically relevant wear factors for orthopedic biopolymers [11–17]. Details of the new lubricant, alongside comparable properties of bovine serum and human synovial fluid, are given in Table 1. It should be noted that the characteristics of synovial fluid, as a biological fluid, will cover a spectrum and will vary depending on the individual as well as any arthritic disease that may be present [4].

**Table 1.** Comparative table of lubricant properties. \* Data taken from [4]. † Data taken from [10].

	<b>Bovine Serum</b>	<b>Human Synovial Fluid</b>	<b>New Lubricant</b>
Protein	Yes (60 g/L) *	Yes (17 g/L) *	No
Polysaccharide	None *	Hyaluronic acid (3.2 g/L) *	Sodium alginate 2% w/w and Gellan gum 0.75% w/w
Phospholipids	None *	Yes (0.13–1.15 g/L) *	None †
Viscosity across Shear rates 0.1–10 (s <sup>-1</sup> )	0.1–0.005 Pas †	5–0.05 Pas †	1–0.05 Pas †
Elastic Modulus (at 1 rad <sup>-1</sup> )	~0.01 Pa †	~0.5 Pa †	~0.75 Pa †

## 2. Results and Discussion

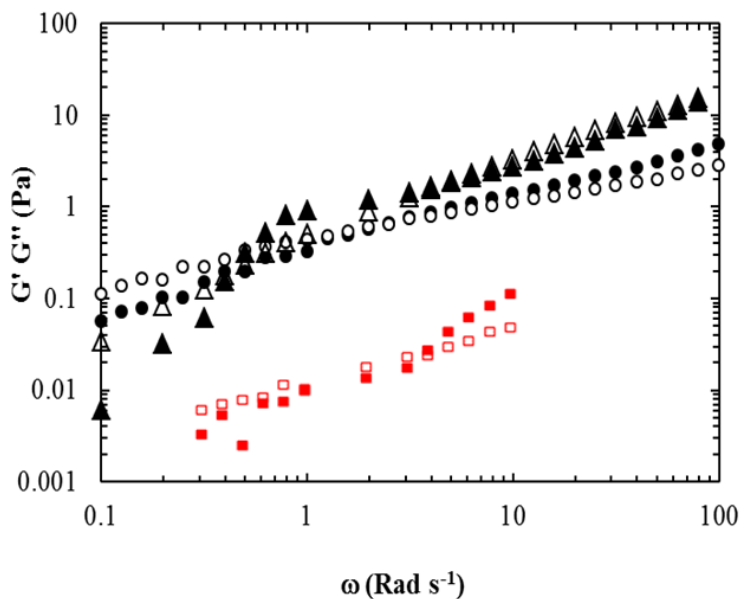
A polysaccharide solution consisting of a 50:50 mix of 2% w/w alginate and 0.75% w/w gellan gum was prepared and investigated as a lubricant for wear testing orthopedic implant materials. This lubricant was shown to have the non-Newtonian characteristics similar to that of aspirated synovial fluid with a reduction in dynamic viscosity with increasing shear rate (Figure 1). Furthermore, the viscosity of both the synovial fluid and the new lubricant was a factor of 10 greater than the bovine serum across all the shear rates measured.



**Figure 1.** Dynamic viscosity vs. shear rate for: aspirated synovial fluid (SF) (open squares); 25% w/v bovine serum (open triangles); and the new lubricant (50:50 mix of 2% w/w alginate and 0.75% w/w gellan gum) (filled diamonds); measurements undertaken at 37 °C. Data adapted from [10].

The rheological disparity of bovine serum, and similarity of the new lubricant to that of synovial fluid, is further highlighted in Figure 2. Synovial fluid has a mechanical spectra characteristic of a concentrated entangled biopolymer solution meaning the storage modulus ( $G'$ ) and loss modulus ( $G''$ ) ( $G'' > G'$  at low frequencies of oscillation and  $G' > G''$  at high frequencies) are mimicked by the new lubricant. Moreover, the moduli measured in the synovial fluid and the new lubricant samples were over an order of magnitude greater than that of the bovine serum. It is thought that the viscoelastic

behavior of the alginate/gellan mixture is due to the alginate providing the viscous response at low frequencies and the gellan contributing to the elastic response at high frequencies [10].



**Figure 2.** Mechanical spectra (2% strain; 37 °C) for: synovial fluid ( $G'$  filled circles and  $G''$  open circles); the new lubricant ( $G'$  filled triangles and  $G''$  open triangles); and dilute bovine serum 25 g/L protein ( $G'$  filled squares and  $G''$  open squares). Data adapted from [10].

After 2.4 million cycles (125 km) of sliding, the mean volumetric wear rate of the ultra high molecular weight polyethylene (UHMWPE) test pins were  $0.45 \text{ mm}^3/\text{million cycles}$ . This was equivalent to a mean wear factor of  $0.099 \times 10^{-6} \text{ mm}^3/\text{Nm}$ . Weight changes were measured for each pin at 12 intervals during the 125 km of testing. Wear factors for each test pin, corrected for the control pins, are shown in Table 2. The control pins increased in weight, and this increase fluctuated in magnitude over the duration of testing, but at the end of testing an increase of  $110 \text{ }\mu\text{g}$  was measured. In comparison, at the end of testing, the four test pins showed a mean weight loss of  $115 \text{ }\mu\text{g}$ . Plate surface roughness values changed from a mean of  $0.015 \text{ }\mu\text{m Rq}$ , prior to the test, to  $0.029 \text{ }\mu\text{m Rq}$  at the end of testing; as shown in Table 3. Rq is the root mean square roughness. No noticeable changes in the characteristics of the new testing fluid over the duration of the test were observed.

**Table 2.** Mean wear factors of the four ultra high molecular weight polyethylene (UHMWPE) test pins after 125 km of sliding; also the final roughness values.

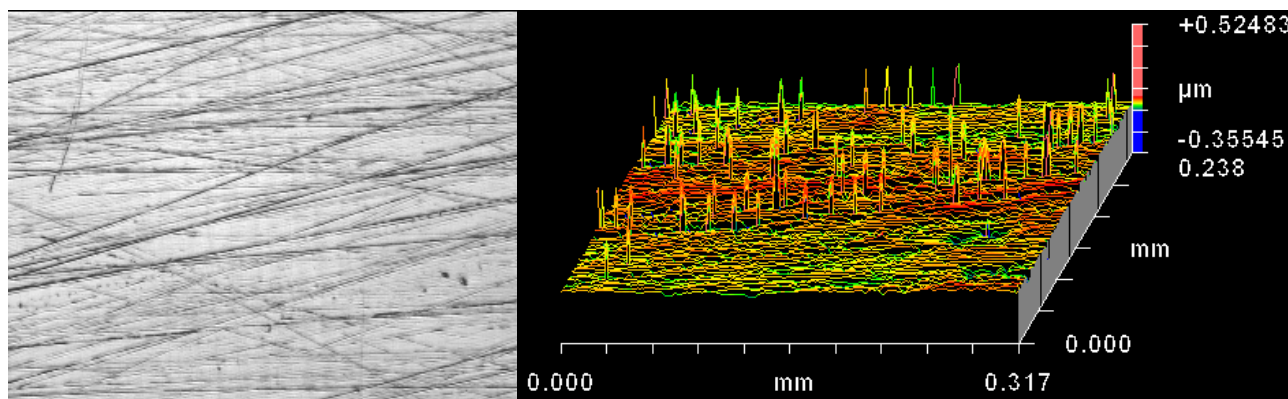
Pin No.	Wear Factor ( $k$ ) ( $\times 10^{-6} \text{ mm}^3/\text{Nm}$ )	Standard Deviation ( $\times 10^{-6} \text{ mm}^3/\text{Nm}$ )	Mean Rq after Test
1	0.120		2.188 $\mu\text{m}$
2	0.133		1.303 $\mu\text{m}$
3	0.078		2.279 $\mu\text{m}$
4	0.063		2.430 $\mu\text{m}$
Average	0.099	0.034	2.050 $\mu\text{m}$

**Table 3.** Mean roughness values of the wear tracks of the four test plates before testing and at the end of testing.

Plate No.	Mean Rq before Test	Mean Rq after Test
1	0.012 $\mu\text{m}$	0.019 $\mu\text{m}$
2	0.015 $\mu\text{m}$	0.036 $\mu\text{m}$
3	0.018 $\mu\text{m}$	0.031 $\mu\text{m}$
4	0.014 $\mu\text{m}$	0.027 $\mu\text{m}$
Average	0.015 $\mu\text{m}$	0.028 $\mu\text{m}$

When the same biomaterials were tested in the same rig using a lubricant of dilute bovine serum a mean wear factor of  $1.6 \times 10^{-6} \text{ mm}^3/\text{Nm}$  was measured [18]. This is close to the reported mean wear factor of  $2.1 \times 10^{-6} \text{ mm}^3/\text{Nm}$  for explanted Charnley hips which also used the same biomaterials of stainless steel and UHMWPE [19]. With the new lubricant, the average mean wear factor was  $0.099 \times 10^{-6} \text{ mm}^3/\text{Nm}$  and therefore over an order of magnitude lower than with dilute bovine serum.

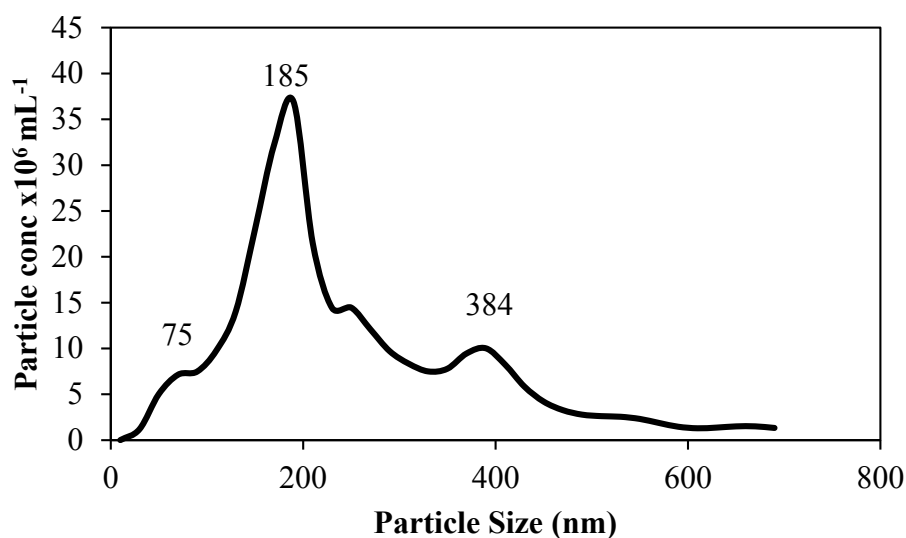
The plate surface roughness values at the end of the test were higher than at the beginning of the test and this may indicate the presence of a transfer film. From the non-contacting profilometer measurements, the key feature was multi-directional scratching (Figure 3). In addition surface adhesions were seen on the wear tracks of the test plates (Figure 3) and these adhesions could have originated from the polyethylene pins. Such a transfer film is formed when a hard material, such as a metal, moves against a softer material, such as a polymer, and shears off and picks up a coating of polymer [20]. If the transfer film is stable, then wear rates may be reduced after an initial high wear interval during film formation [20]. Previous work with bovine serum as a lubricant for wear testing UHMWPE pins against a metal counterface has indicated no change in roughness of the metal counterface at the end of testing, at a minimum of 2.5 million cycles, and no transfer film [21,22]. In addition, transfer films of UHMWPE are not seen clinically with such implants [23]. Previously it has been shown that the addition of hyaluronic acid to serum to increase its viscosity had little effect on wear of UHMWPE [18,24]. It may be that, as the sliding velocity is relatively low, so viscosity is not the principal issue in the wear of UHMWPE. Instead, the action of animal-based proteins in boundary lubrication seems to be of high importance as, when animal-based proteins are absent, a transfer film occurs. This has been known for some time with lubricants of distilled water and Ringer solution [25,26] but has also been shown to occur when other novel lubricants (DPPC (dipalmitoylphosphatidylcholine) and soy protein) have been used [27]. A more recent study which wear tested UHMWPE pins against CoCr plates in the presence of 13 different lubricants [9] found that only an egg white based lubricant gave wear factors which were statistically similar to those given by dilute bovine serum. It has been argued for some time that bovine serum serves as a boundary lubricant to prevent a transfer film being formed [28]. In turn it is felt that the proteins within bovine serum allow boundary lubrication without transfer film [27]. As shown by our results, polysaccharides are unable to facilitate boundary lubrication in this application.



**Figure 3.** Left hand side image shows an optical image of the worn plate; note the multi-directional scratches; **Right** hand side image shows the equivalent “oblique plot” produced by the ZYGO non-contacting profilometer. Note the peaks which indicate attached material; note too that the horizontal scale is over one thousand times larger than the vertical so that the peaks are not as “severe” as they appear.

For the UHMWPE pins, the mean pre-test roughness was  $2.143 \mu\text{m Rq}$ . While the  $Rq$  values at the end of the test were numerically similar, it was noted that the initial concentric machining marks on the pins had largely been removed.

Analysis of the wear debris in the new lubricant revealed particle sizes ranging from  $\sim 50$  to  $400 \text{ nm}$  (Figure 4). These nanoparticles are of a similar size range to wear debris found in failed total knee arthroplasties (low contact stress mobile bearing prostheses) [29].



**Figure 4.** Particle size distribution of wear debris in the new lubricant post test (50:50 mix of 2% w/w alginate and 0.75% w/w gellan gum).

There were a number of limitations. Given that the influence of the controls was so important on the overall wear, we could perhaps have employed control pins which were subject to the same axial load as our test pins. However we would point out that: we employed three control pins to try and minimize the effect of lubricant uptake on the overall wear values; unloaded control pins allowed a direct

comparison with our previous work which is compared to in the text [18]; and also that it is usual to employ unloaded control pins in such screening wear tests [30–32]. For future work we will look to employing statically loaded control pins. Another limitation was the small test sample size, however such a sample size was in line with previous work [18,31] and the sample size was sufficient to indicate that the new lubricant was unable to match wear factors associated with the use of bovine serum as a lubricant.

### 3. Experimental Section

The new lubricant consisted of a mixture of sodium alginate and gellan gum, and aimed to match the rheology of synovial fluid. Sodium alginate was used as a synthetic substitute to hyaluronic acid, giving the lubricant non-Newtonian characteristics as seen with synovial fluid, while the gellan gum replaced the lubricin in synovial fluid and aimed to reproduce the viscoelasticity of synovial fluid. Stock solutions of the test lubricants were prepared as previously described [10]. A 50:50 mix of 2% *w/w* alginate (Protanal LF200) and 0.75% *w/w* gellan gum (kelcogel CG-LA) were subjected to viscosity measurements at 37 °C using a shear ramp from 0.1–10 s<sup>-1</sup>. These parameters were chosen to match similar shear rates the lubricant was subjected to during wear testing. Oscillatory shear measurements of storage modulus (*G'*) and loss modulus (*G''*) were taken at a constant strain of 2% (within the linear viscoelastic region) across a frequency range of 0.1–100 rad·s<sup>-1</sup> at 37 °C. Both viscosity measurements and oscillatory measurements were performed on a Bohlin Gemini nano rheometer using a 55 mm parallel plate geometry with a 100 mm gap. All rheological measurements were performed using the set up and parameters as used previously by Smith *et al.* [10].

The four-station wear test rig has been described previously [18]. A schematic image of the rig is offered in Figure 5. As can be seen the key elements are a motor which provided the reciprocating motion to the test bed upon which were held the four test plates. Each test plate sat within an individual bath. Each test pin, which was held within a pin holder, was also subject to a rotational motion, which was provided by a 12 V motor via a pair of spur gears. Each test pin was subject to load which was applied by a weight mounted towards the end of a lever arm.

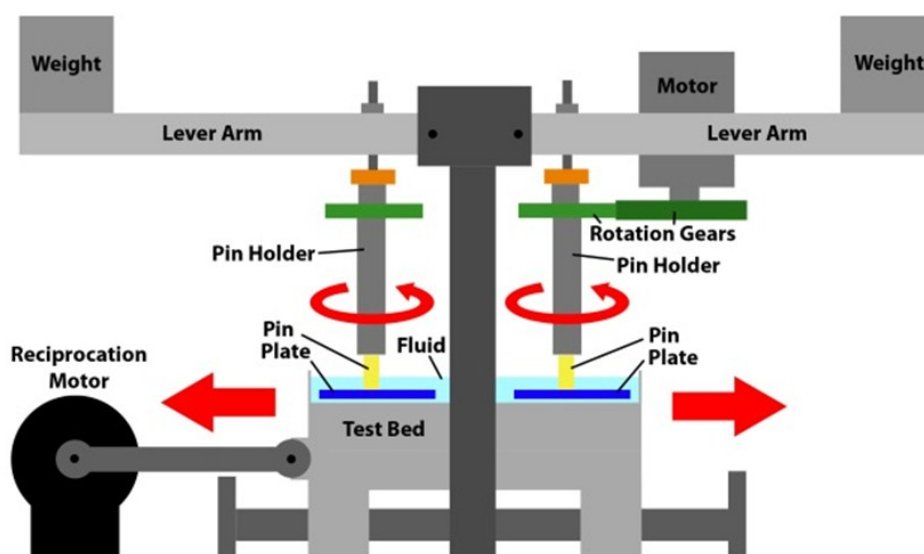


Figure 5. Schematic drawing of the pin-on-plate test rig.



Each of the four test stations applied rotational motion at 1 Hz to 6 mm diameter test pins which were loaded at 40 N against 316 L stainless steel test plates (50 mm × 25 mm × 3 mm) which had been polished to a mean surface finish of 0.015 μm Rq. The 40 N load resulted in a nominal stress of approximately 1.4 MPa. This not only matched that used in previous tests [18] but also fitted well with research which indicates that the average contact pressure in an artificial hip joint is likely within the range 1–2 MPa [22]. A reciprocating motion, again at 1 Hz, was applied to the test plates. The stroke length was 30 mm. Pins were manufactured from UHMWPE and the test pins were subject to multi-directional motion through the combination of the rotational and reciprocating motion. Such a combined motion resulted in each point on the wear face of the test pins following elliptical or quasi-elliptical wear tracks [11], similar to those motions seen on implanted hip prostheses [33]. The lubricant was not heated as it is recognized that, with higher temperatures, increased protein precipitation occurs during testing of hip implants and that this served to decrease wear, through the formation of an adherent layer on the surfaces of artificial hips [34]. Similarly other research has shown that not heating the bulk lubricant to 37 °C resulted in less evaporation of lubricant (so that experimental conditions remained largely unchanged); reduced microbial growth (and thus no need for additives which are both toxic and may change the wear mechanisms); reduced protein precipitation; and, most importantly, wear results which were similar to clinical findings [22].

At regular intervals of approximately 60 h the test was stopped, “test” and “control” lubricant was collected into individual containers, pins and plates were cleaned and weighed three times to a consistent protocol on a balance with a sensitivity of 10 μg. “Control” pins were employed to take account of any lubricant uptake or fluctuations in weight. They were kept in the same test lubricant and subject to cleaning and weighing at the same intervals as the test pins. From such compensated weight changes, a volume change was obtained by using the density of UHMWPE, which was taken to be 949 kg/m<sup>3</sup>. Using linear regression and plotting compensated mass loss against sliding distance, the wear rate was computed. Then the wear rate was divided by the density, load and sliding distance to give a wear factor. Thus the wear factor ( $k$ , units mm<sup>3</sup>/Nm) for each pin was defined as the volume lost ( $V$ , units mm<sup>3</sup>) divided by the product of the load ( $L$ , units N) and the sliding distance ( $D$ , units m):

$$k = \frac{V}{LD} \quad (1)$$

Prior to, and at the end of testing, fifty readings of the roughness of the wear track on each of the test plates was measured using a ZYGO 5000 non-contacting profilometer, which had a vertical resolution of better than 1 nm [35,36].

Accumulation of wear debris in the test lubricants was verified using nanoparticle tracking analysis (Nanosight LM10). In order to analyze the wear debris the polysaccharides were removed from the test lubricant by ethanol extraction. Briefly, at the end point of the wear test the lubricant was collected and a diluted 1:100 with ultrapure water (18.2 MΩ·cm). A threefold volume of cold ethanol (95% v/v) was then added and the precipitated polysaccharides were removed with a spatula. The remaining solution was filtered using a Buchner funnel with a pore size of 11 μm. The filtrate was collected and the ethanol removed using a rotary evaporator. The remaining wear debris was then re-suspended in ultrapure water prior to analysis.

#### 4. Conclusions

As currently constituted, the novel lubricant does not reproduce the clinical wear factors associated with failed and explanted metal-on-polyethylene hips. Nor those measured when dilute bovine serum is used as the lubricant for the wear testing of UHMWPE against a metallic counterface. This inconsistency may indicate that a protein component, as is inherent with bovine serum, is essential in a lubricant for wear testing orthopedic biopolymers. This will be an area of future research.

#### Acknowledgments

No direct research funding for any of the work outlined in this paper was received.

#### Author Contributions

Thomas Joyce conceived and designed the experiments; Martin Thompson performed the experiments; Ben Hunt undertook topographical measurements; Thomas Joyce and Martin Thompson analyzed the data; Alan Smith contributed the lubricant and related measurements; Thomas Joyce wrote the paper.

#### Conflicts of Interest

The authors declare no conflict of interest.

#### References

1. Young, E. *National Joint Registry for England, Wales and Northern Ireland*; 11th Annual Report; National Joint Registry: Hemel Hempstead, UK, 2014.
2. Kim, Y.H.; Park, J.W.; Patel, C.; Kim, D.Y. Polyethylene wear and osteolysis after cementless total hip arthroplasty with alumina-on-highly cross-linked polyethylene bearings in patients younger than thirty years of age. *J. Bone Jt. Surg.* **2013**, *95*, 1088–1093.
3. Gallo, J.; Goodman, S.B.; Konttinen, Y.T.; Wimmer, M.A.; Holinka, M. Osteolysis around total knee arthroplasty: A review of pathogenetic mechanisms. *Acta Biomater.* **2013**, *9*, 8046–8058.
4. Harsha, A.P.; Joyce, T.J. Challenges associated with using bovine serum in wear testing orthopaedic biopolymers. *Proc. Inst. Mech. Eng. Part H: J. Eng. Med.* **2011**, *225*, 948–958.
5. *Implants for Surgery—Wear of Total Hip Joint Prostheses, Parts 1 and 2*; ISO14242; ISO: Geneva, Switzerland, 2000.
6. *Implants for Surgery—Wear of Total Knee Joint Prostheses, Parts 1 and 2*; ISO14243; ISO: Geneva, Switzerland, 2009.
7. *Standard Test Method for Wear Testing of Polymeric Materials Used in Total Joint Prostheses*; ASTM-F732-00; ASTM: West Conshohocken, PA, USA, 2000.
8. Joyce, T.J. Biopolymer tribology. In *Polymer Tribology*; Sinha, S.K., Briscoe, B.J., Eds.; Imperial College Press: London, UK, 2009; pp. 227–266.
9. Scholes, S.C.; Joyce, T.J. *In vitro* tests of substitute lubricants for wear testing orthopaedic biomaterials. *Proc. Inst. Mech. Eng. Part H: J. Eng. Med.* **2013**, *227*, 693–703.

10. Smith, A.M.; Fleming, L.; Wudebwe, U.; Bowen, J.; Grover, L.M. Development of a synovial fluid analogue with bio-relevant rheology for wear testing of orthopaedic implants. *J. Mech. Behav. Biomed. Mater.* **2014**, *32*, 177–184.
11. Joyce, T.J.; Unsworth, A. A multi-directional wear screening device and preliminary results of UHMWPE articulating against stainless steel. *Bio-Med. Mater. Eng.* **2000**, *10*, 241–249.
12. Joyce, T.J. Biopolymer wear screening rig validated to astm f732-00 and against clinical data. *Tribol. Mater. Surf. Interfaces* **2007**, *1*, 63–67.
13. Joyce, T.J.; Unsworth, A. A comparison of the wear of cross-linked polyethylene against itself with the wear of ultra-high molecular weight polyethylene against itself. *J. Eng. Med.* **1996**, *210*, 297–300.
14. Joyce, T.J.; Vandelli, C.; Cartwright, T.; Unsworth, A. A comparison of the wear of cross-linked polyethylene against itself under reciprocating and multi-directional motion with different lubricants. *Wear* **2001**, *250*, 206–211.
15. Joyce, T.J.; Thompson, P.; Unsworth, A. The wear of ptfe against stainless steel in a multi-directional pin-on-plate wear device. *Wear* **2003**, *255*, 1030–1033.
16. Joyce, T.J.; Unsworth, A. Wear studies of all UHMWPE couples under various bio-tribological conditions. *J. Appl. Biomater. Biomech.* **2004**, *2*, 29–34.
17. Joyce, T.J. The wear of two orthopaedic biopolymers against each other. *J. Appl. Biomater. Biomech.* **2005**, *3*, 141–146.
18. Joyce, T.J. Wear tests of orthopaedic biopolymers with the biolubricant augmented by a visco-supplement. *Proc. Inst. Mech. Eng. Part J: J. Eng. Tribol.* **2009**, *223*, 297–302.
19. Hall, R.M.; Unsworth, A.; Siney, P.D.; Wroblewski, B.M. Wear in retrieved charnley acetabular sockets. *J. Eng. Med.* **1996**, *210*, 197–207.
20. Black, J. *Biological Performance of Materials: Fundamentals of Biocompatibility*; CRC Press: Boca Raton, FL, USA, 2006.
21. Harsha, A.P.; Joyce, T.J. Comparative wear tests of ultra-high molecular weight polyethylene and cross-linked polyethylene. *Proc. Inst. Mech. Eng. Part H: J. Eng. Med.* **2013**, *227*, 600–608.
22. Saikko, V. A hip wear simulator with 100 test stations. *Proc. Inst. Mech. Eng. Part H: J. Eng. Med.* **2005**, *219*, 309–318.
23. Wang, A.; Sun, D.C.; Stark, C.; Dumbleton, J.H. Wear mechanisms of UHMWPE in total joint replacements. *Wear* **1995**, *181–183*, 241–249.
24. Wang, A.; Essner, A.; Schmidig, G. The effects of lubricant composition on *in vitro* wear testing of polymeric acetabular components. *J. Biomed. Mater. Res. (Appl. Biomater.)* **2004**, *68B*, 45–52.
25. McKellop, H.A. Wear of artificial joint materials ii. Twelve-channel wear-screening device: Correlation of experimental and clinical results. *Eng. Med.* **1981**, *10*, 123–136.
26. Kumar, P.; Oka, M.; Ikeuchi, K.; Shimizu, K.; Yamamuro, T.; Okumura, H.; Koloura, Y. Low wear rates of UHMWPE against zirconia ceramic in comparison to alumina ceramic and sus 316l alloy. *J. Biomed. Mater. Res.* **1991**, *25*, 813–828.
27. Saikko, V.; Ahlroos, T. Type of motion and lubricant in wear simulation of polyethylene acetabular cup. *J. Eng. Med.* **1999**, *213*, 301–310.

28. Wang, A.; Essner, A.; Stark, C.; Dumbleton, J.H. Comparison of the size and morphology of UHMWPE wear debris produced by a hip joint simulator under serum and water lubricated conditions. *Biomaterials* **1996**, *17*, 865–871.
29. Huang, C.H.; Ho, F.Y.; Ma, H.M.; Yang, C.T.; Liao, J.J.; Kao, H.C.; Young, T.H.; Cheng, C.K. Particle size and morphology of UHMWPE wear debris in failed total knee arthroplasties—A comparison between mobile bearing and fixed bearing knees. *J. Orthop. Res.* **2002**, *20*, 1038–1041.
30. Saikko, V. Effect of lubricant protein concentration on the wear of ultra-high molecular weight polyethylene sliding against a coccr counterface. *Trans. Am. Soc. Mech. Eng. J. Tribol.* **2003**, *125*, 638–642.
31. Bragdon, C.R.; O'Connor, D.O.; Lowenstein, J.D.; Jasty, M.; Biggs, S.A.; Harris, W.H. A new pin-on-disk wear testing method for simulating wear of polyethylene on cobalt-chrome alloy in total hip arthroplasty. *J. Arthroplast.* **2001**, *16*, 658–665.
32. Lancaster, J.G.; Dowson, D.; Fisher, J.; Isaac, G.H. The wear of ultra-high molecular weight polyethylene sliding on metallic and ceramic counterfaces representative of current femoral surfaces in joint replacement. *Proc. Inst. Mech. Eng. Part H: J. Eng. Med.* **1997**, *211*, 17–24.
33. Ramamurti, B.S.; Estok, D.M.; Jasty, M.; Harris, W.H. Analysis of the kinematics of different hip simulators used to study wear of candidate materials for the articulation of total hip arthroplasties. *J. Orthop. Res.* **1998**, *16*, 365–369.
34. Liao, Y.S.; McKellop, H.A.; Lu, Z.; Campbell, P.; Benya, P. The effect of frictional heating and forced cooling on the serum lubricant and wear of uhmw polyethylene cups against cobalt-chromium and zirconia balls. *Biomaterials* **2003**, *24*, 3047–3059.
35. Joyce, T.J.; Langton, D.J.; Jameson, S.S.; Nargol, A.V.F. Tribological analysis of failed resurfacing hip prostheses and comparison with clinical data. *Proc. Inst. Mech. Eng. Part J: J. Eng. Tribol.* **2009**, *223*, 317–323.
36. Joyce, T.J.; Grigg, H.; Langton, D.J.; Nargol, A.V.F. Quantification of self-polishing *in vivo* from explanted metal-on-metal total hip replacements. *Tribol. Int.* **2011**, *44*, 513–516.