
Johnston L, Power M, Sloan P, Long A, Silmon A, Chaffey B, Lisgo AJ, Little L, Vercauteren E, Steiniche T, Meyer T, Simpson J. [Clinical performance evaluation of the Idylla NRAS-BRAF mutation test on retrospectively collected formalin-fixed paraffin-embedded colorectal cancer tissue](#). *Journal of Clinical Pathology* 2018, **71**(4), 336-343.

DOI link

<https://doi.org/10.1136/jclinpath-2017-204629>

ePrints link

<http://eprint.ncl.ac.uk/247260>

Date deposited

10/04/2018

Copyright

© Article author(s) (or their employer(s) unless otherwise stated in the text of the article) 2018. All rights reserved. No commercial use is permitted unless otherwise expressly granted. This is an Open Access article distributed in accordance with the Creative Commons Attribution Non Commercial (CC BY-NC 4.0) license, which permits others to distribute, remix, adapt, build upon this work non-commercially, and license their derivative works on different terms, provided the original work is properly cited and the use is non-commercial. See: <http://creativecommons.org/licenses/by-nc/4.0/>

Licence

This work is licensed under a [Creative Commons Attribution-NonCommercial 4.0 International License](#)





OPEN ACCESS

Clinical performance evaluation of the Idylla NRAS-BRAF mutation test on retrospectively collected formalin-fixed paraffin-embedded colorectal cancer tissue

Louise Johnston,¹ Michael Power,¹ Philip Sloan,^{2,3} Anna Long,² Angela Silmon,⁴ Ben Chaffey,⁴ Andrea Jane Lisgo,⁴ Liam Little,⁴ Ellen Vercauteren,⁵ Torben Steiniche,⁶ Tine Meyer,⁶ John Simpson¹

¹National Institute for Health Research (NIHR) Diagnostic Evidence Co-operative (DEC) Newcastle, Newcastle University, Newcastle upon Tyne, UK

²Department of Cellular Pathology, Newcastle upon Tyne Hospitals NHS Trust, Newcastle upon Tyne, UK

³Northern Institute for Cancer Research, Newcastle University, Newcastle, UK

⁴NewGene Ltd, Bioscience Building, International Centre for Life, Newcastle upon Tyne, UK

⁵Biocartis NV, Generaal De Wittelaan, Mechelen, Belgium

⁶Institute of Pathology, Aarhus University Hospital, Aarhus, Denmark

Correspondence to

Dr Michael Power; Michael.Power@ncl.ac.uk

Received 16 June 2017

Revised 3 August 2017

Accepted 4 August 2017

Published Online First

12 September 2017

ABSTRACT

Aims Understanding the molecular mechanisms of underlying disease has led to a movement away from the one-drug-fits-all paradigm towards treatment tailored to the genetic profile of the patient. The Biocartis Idylla platform is a novel fully automated, real-time PCR-based *in vitro* diagnostic system. The Idylla NRAS-BRAF mutation test has been developed for the qualitative detection of mutations in *NRAS* and *BRAF* oncogenes, facilitating genetic profiling of patients with cancer. The aim of this study was to carry out a formal clinical performance evaluation.

Methods Two-hundred and forty-two formalin-fixed paraffin-embedded (FFPE) human malignant colorectal cancer (CRC) tissue samples were identified in departmental archives and tested with both the Idylla NRAS-BRAF mutation test and the Agena Bioscience MassARRAY test.

Results The overall concordance between the Idylla NRAS-BRAF mutation test and the MassARRAY comparator reference test result was 241/242 (99.59%, lower bound of one-sided 95% CI=98.1%) for *NRAS* and 242/242 (lower bound of 95% one-sided 95% CI=98.89%) for *BRAF*. The Idylla NRAS-BRAF test detected one *NRAS* mutation that had not been reported by the MassARRAY comparator reference test. Reanalysis of this sample by droplet digital PCR confirmed that the mutation was present, but at an allelic frequency below the stated sensitivity level of the MassARRAY system.

Conclusion These results confirm that the Idylla NRAS-BRAF mutation test has high concordance with a widely used *NRAS-BRAF* test, and is therefore suitable for use as an *in vitro* diagnostic device for this application.

INTRODUCTION

The epidermal growth factor receptor (EGFR) and its downstream signalling pathways are involved in the development and progression of several human tumours including colorectal cancer (CRC).¹⁻³ Activated signalling pathways including the RAS-RAF-BRAF-MAPK and the phosphatidylinositol 3-kinase (PI3K)-Akt pathways are key drivers of tumour growth and progression.^{4,5} Patients with CRC can be successfully treated with anti-EGFR monoclonal antibody therapies, such as panitumumab or cetuximab, which work by disrupting

EGFR signals⁶⁻¹⁰—provided the tumours do not have mutations in EGFR signalling pathways.¹¹⁻¹⁴

Testing patients for specific mutations that are linked to lack of response to EGFR blockade prior to commencing therapy ensures they receive the most appropriate treatment, and that treatment benefits, adverse effects and costs will be optimised.

Reduced anti-EGFR treatment efficacy was initially thought to be the result of mutations within *KRAS* exon 2 (codons 12 and 13). Therefore, *KRAS* genotyping was routinely used to stratify patients with CRC into those likely to respond to anti-EGFR therapy and those unlikely to respond. Further mutations causing resistance to anti-EGFR therapy were subsequently discovered through two large clinical studies (PRIME and CRYSTAL) which showed that 14%–17% wild-type (WT) *KRAS* exon 2 individuals actually responded poorly to anti-EGFR therapy.^{9,15} It is now known that resistance to therapy has a range of genetic causes: mutations in *KRAS* (exons 2, 3 and 4) and *NRAS* (exons 2, 3 and 4) are found in 40%–45% and 5%–10% of patients, respectively.^{5,16,17} *BRAF* V600E mutation is detected in 4%–18% of CRC cases and is prognostic of outcomes, but, in contrast to *KRAS* which is predictive of response is not used to guide anti-EGFR treatment.¹⁶⁻¹⁹

The Idylla System (Biocartis, Mechelen, Belgium) is a fully automated, real-time PCR-based molecular diagnostics system.²⁰⁻²⁶ The Idylla NRAS-BRAF mutation test is a novel *in vitro* diagnostic medical device (IVD) for the qualitative detection of mutations in codons 12, 13, 59, 61, 117 and 146 of the *NRAS* oncogene and codon 600 in the *BRAF* oncogene in formalin-fixed paraffin-embedded (FFPE) human malignant CRC tissue. This non-randomised study, was a clinical performance evaluation of the Idylla NRAS-BRAF mutation test with retrospectively collected samples and prospectively planned data generation.

MATERIALS AND METHODS

The Idylla platform

The Idylla molecular diagnostic platform is a fully automated, allele-specific real-time PCR-based molecular diagnostic system.²⁰ It combines sample preparation with PCR thermocycling to detect



To cite: Johnston L, Power M, Sloan P, et al. *J Clin Pathol* 2018;**71**:336–343.

Table 1 *NRAS* and *BRAF* mutations detected by the Idylla *NRAS*-*BRAF* mutation test

Gene	Exon	Codon	Mutation	Protein	Nucleotide change	Genetic call			
<i>NRAS</i>	2	12	G12D	p.(Gly12Asp)	c.35G>A	G12D			
			G12C	p.(Gly12Cys)	c.34G>T	G12C			
			G12S	p.(Gly12Ser)	c.34G>A	G12S			
			G12A	p.(Gly12Ala)	c.35G>C	G12A/V			
			G12V	p.(Gly12Val)	c.35G>T				
		13		G13D	p.(Gly13Asp)	c.38G>A	G13D		
				G13R	p.(Gly12Arg)	c.37G>C	G12R/V		
				G12V	p.(Gly13Va)	c.38G>T			
				3	59	A59T	p.(Ala59Thr)	c.175G>A	A59T
						61	Q61K	p.(Gln61Lys)	c.181A>G
	Q61R	p.(Gln61Arg)	c.182A>G	Q61R					
	Q61L	p.(Gln61Leu)	c.182A>T	Q61L					
	Q61H	p.(Gln61His)	c.183A>T	Q61H					
	4	117	K117N	p.(Lys117Asn)	c.351G>C	K11N			
				p.(Lys117Asn)	c.351G>T				
A146T			p.(Ala146Thr)	c.426G>A	A146T/V				
A146V			p.(Ala146Val)	c.437C>T					
<i>BRAF</i>	15	600	V600E	p.(Val600Glu)	c.1799T>A	V600E/D			
			V600E	p.(Val600Glu)	c.1799_1800delinsAA				
			V600D	p.(Val600Asp)	c.1799_1800delinsAC				
			600	V600K	p.(Val600Lys)	c.1798_1799delinsAA	V600K/R		
				V600R	p.(Val600Arg)	c.1798_1799delinsAA			

molecular targets from a variety of solid and liquid samples including FFPE slices. Briefly, FFPE tissue sections are placed directly into the Idylla system cartridge, with no preprocessing. The cartridge is then inserted into the Idylla platform, where high-intensity focused ultrasound (HiFu) technology, buffers, reagents and heat induces deparaffinisation, tissue disruption, cell lysis and subsequent release of nucleic acid. Allele-specific primers and fluorescent probes then perform real-time PCR amplification and mutation detection. All required consumables are provided in the cartridge, and the Idylla Console and instruments are CE marked.

The Idylla *NRAS*-*BRAF* mutation test

The Idylla *NRAS*-*BRAF* mutation test uses allele-specific multiplex PCR reactions to amplify 23 mutations in codons 12, 13, 59, 61, 117, 146 of the *NRAS* oncogene and codon 600 of the *BRAF* oncogene. A set of parameters describing the generated PCR curves are determined by the Idylla software, for example, ΔCq value (calculated as the difference between the quantification cycle value (Cq) of the gene control signal and the Cq of the mutant signal). A sample is classified as mutation positive if the parameters of the PCR curve generated are within the validated range. Otherwise the sample is reported as being mutation negative, that is, WT. Table 1 lists the mutations detected by the test.

The results obtained from the Idylla *NRAS*-*BRAF* mutation test during this study were not used for clinical or diagnostic purposes and were not made available to patients or their clinicians.

The comparator test

The *NRAS* and *BRAF* mutation status for each FFPE tissue sample was assessed using the MassARRAY System (Agena Bioscience). Existing test results were used if the comparator test had been performed within 2 years of the start of this study and no further

slides or slices had been taken from the source FFPE block. H&E slides were taken at the start and end of block slicing to confirm sample homogeneity. If the sample block had been cut since the initial comparator test analysis, newly prepared alternating slides/slices were taken to rerun the comparator test. To reduce the risk of bias, different operators performed testing on the MassARRAY System and the Idylla *NRAS*-*BRAF* mutation test.

The Agena MassARRAY mutation test

The Agena MassARRAY mutation test used in this study is a Laboratory Developed Test which is within the scope of the ISO 15189 accreditation held by NewGene Ltd, and is routinely used clinically. Samples with known mutation profiles, as used during clinical validation of the assay for ISO 15189 accreditation, were

Box 1 Sample selection criteria

Formalin-fixed paraffin-embedded (FFPE) colorectal cancer (CRC) samples were included if they were:

- ▶ Obtained from male or female patients ≥ 18 years of age
- ▶ Approved for investigational purposes according to the applicable laws
- ▶ Histologically confirmed to be primary or metastatic malignant CRC
- ▶ Fixed in formalin for a maximum time of 48 hours
- ▶ Less than 10 years old and had been stored at ambient conditions
- ▶ Stored at room temperature for not more than 60 days prior to Idylla testing

CRC samples were excluded if:

- ▶ The patient declined to provide their sample to third parties for research purposes

Identification of retrospectively collected FFPE tissue samples from patients with histologically confirmed colorectal cancer (CRC).

Tissue sections of 5 – 10µm thick were sampled as close as possible (within the same FFPE block) to the sections used for reference testing

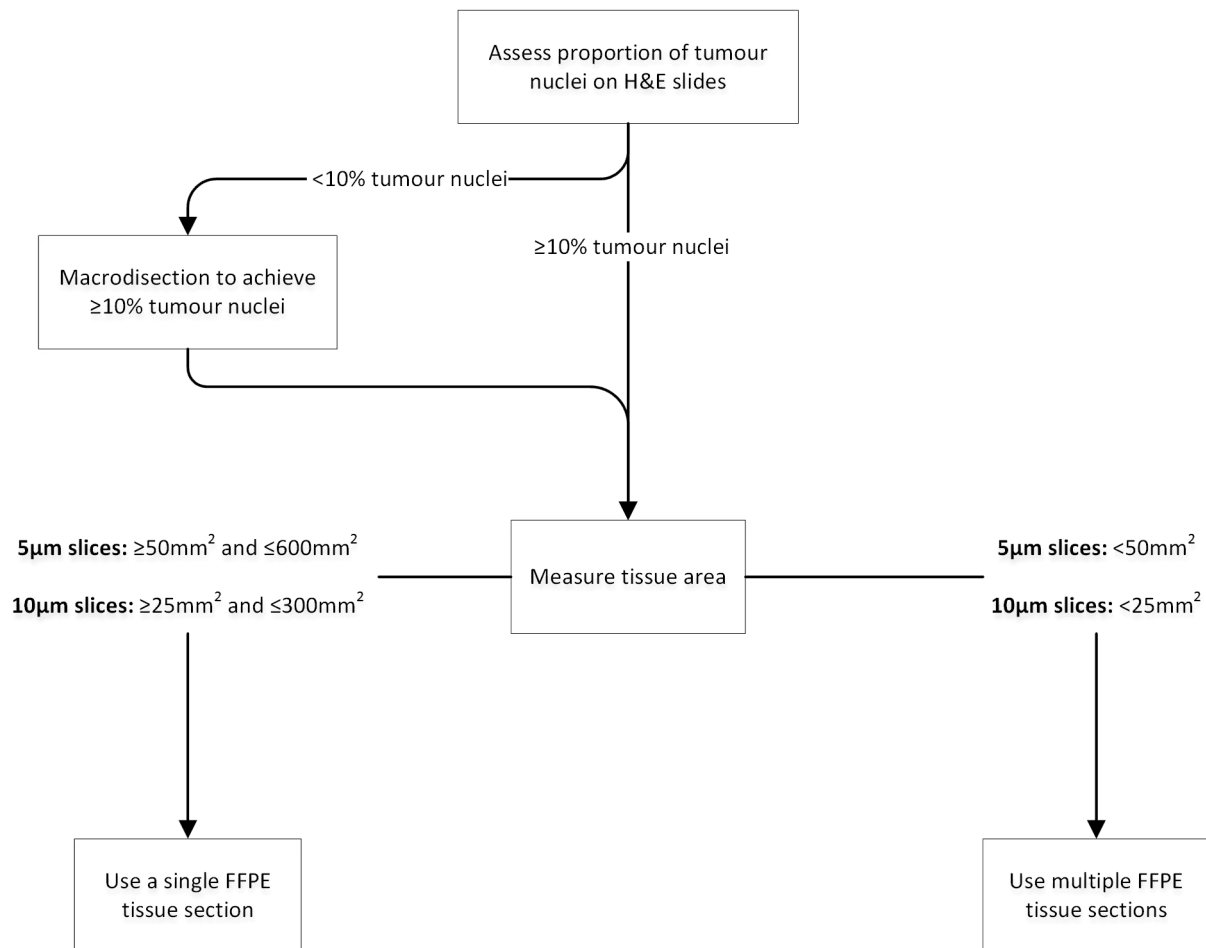


Figure 1 Formalin-fixed paraffin-embedded (FFPE) sample preparation algorithm prior to Idylla NRAS-BRAF mutation test. Histologically confirmed, retrospectively collected FFPE colorectal cancer tissue samples were identified and tissue sections 5 or 10µm thick were sampled as close as possible (within the same FFPE block) to the sections used for reference testing. Prior to analysis, the tumour content and area were determined on a H&E slide by a consultant histopathologist at both sites. If required, macrodissections were performed to ensure tumour nuclei content of more than 10% in the sample for analysis. The volume of material was specified to ensure that there was sufficient for the assay while not overloading the device.

used as positive controls. ‘No template’ reactions, prepared with deionised H₂O in place of template DNA were used as controls for non-specific amplification.

MassARRAY utilises the primer extension analytical method to determine the presence or absence of single nucleotide polymorphisms (SNPs) which cause specific mutations in the protein encoded by a gene. First, target region-specific PCR with short amplicons is used to amplify the DNA encoding the target sequence. These PCR products are then probed for the presence of the mutation of interest using an oligonucleotide which is complementary to the region immediately adjacent to the SNP location. This is then extended by only one base, using 2',3' dideoxynucleotides (ddNTPs); the ddNTP which terminates the oligonucleotide chain corresponds to the base

code at the SNP location. A matrix-assisted laser desorption/ionization time-of-flight (MALDI-ToF) mass spectrometry system is then used to differentiate between oligonucleotide species on the basis of their differing masses, identifying the various SNP bases present at that location and also quantifying the relative allelic frequency of the mutant sequence versus the WT.

Study size estimation

The number of samples required for a diagnostic agreement study with 80% power and expected agreement rate of 95% is 188. To allow for invalid runs and samples, the target number of FFPE tumour tissue blocks to be tested was set at 250. At least

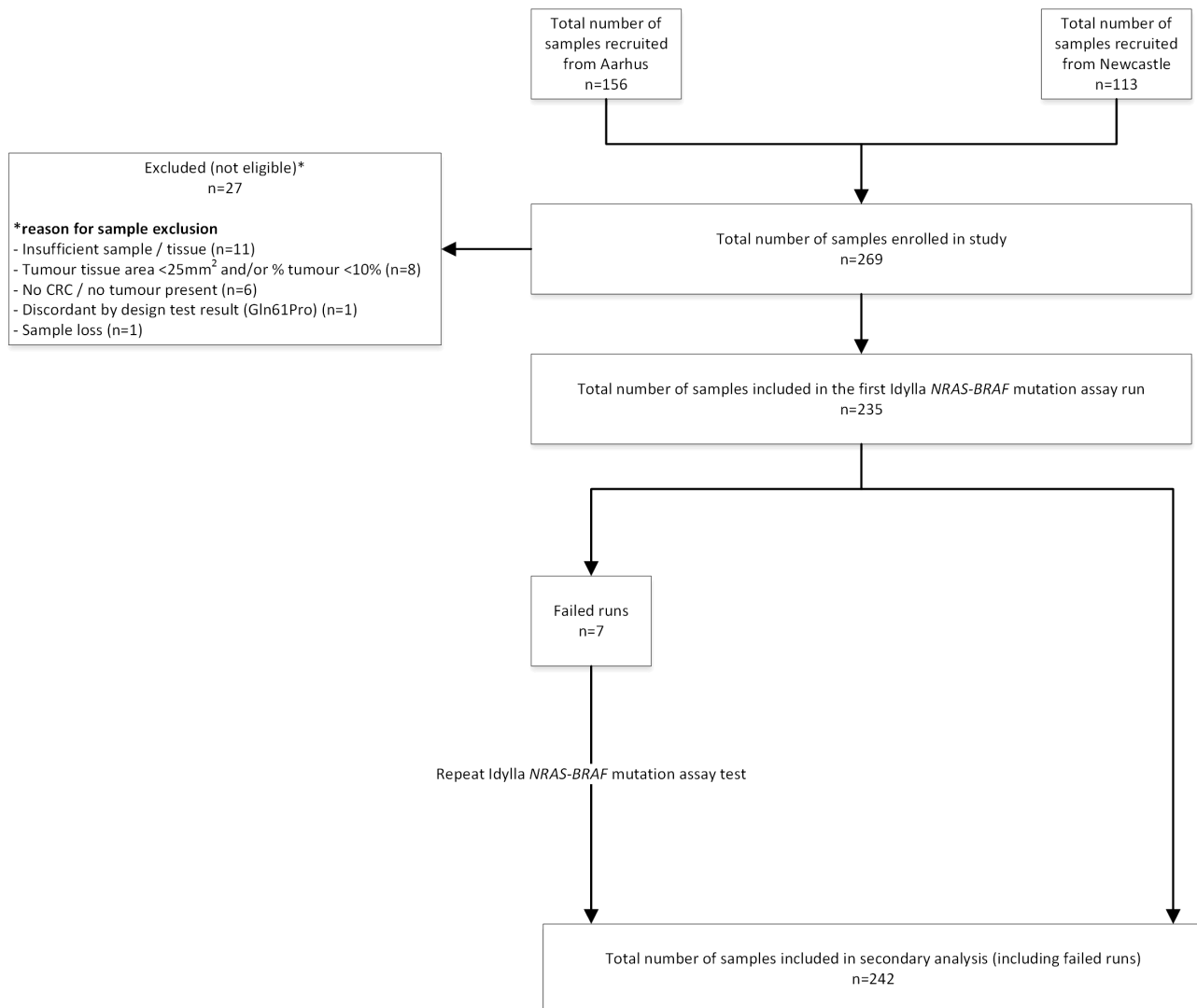


Figure 2 Process of enrolling samples into the study.

30 valid FFPE samples with known *NRAS* mutations, at least 30 samples with known *BRAF* mutations, and up to 190 samples with WT *KRAS* were planned to be included.

Tissue selection criteria and process

The inclusion criteria for samples can be found in [box 1](#). Samples were obtained from two centres: The Royal Victoria Infirmary, Newcastle upon Tyne Hospitals NHS Foundation Trust (UK; n=113), and the Institute of Pathology, Aarhus University Hospital (Denmark; n=156). All available samples were entered into the study. [Figure 1](#) shows how FFPE tissue samples were prepared for use in the Idylla NRAS-BRAF mutation test.

The protocol specified that samples should have at least 10% of their content identified as tumorous cells because the clinical importance of results (concordant or discrepant) from samples with very low proportions of tumorous cells could be debatable.

Diagnostic performance measurements

Baseline testing

No discrepancies were observed between the original results and the repeat results when retesting with the MassARRAY was

performed on specimens that had originally been tested with other devices.

Percentage agreement

As it is not feasible to set-up a study with large numbers of each individual mutant, the performance of the Idylla NRAS-BRAF mutation test was scored based on total agreement. Overall agreement (% total agreement), and negative and positive agreements were determined together with their 95% one-sided CIs. Overall agreement was defined as the proportion of concordant results in all results. Positive agreement was defined as the proportion of concordant results in positive Idylla results. Negative agreement was defined as the proportion of concordant results in negative Idylla results.

Discordant by design results

The Idylla NRAS-BRAF panel detects 18 *NRAS* mutations and 5 *BRAF* mutations ([table 1](#)), while the MassARRAY NRAS-BRAF panel detects 25 *NRAS* mutations and provides a *BRAF* V600E result as a generic call rather than distinguishing between V600E/D or V600K/R. The seven additional *NRAS* mutations detected by the MassARRAY but not by the Idylla NRAS-BRAF

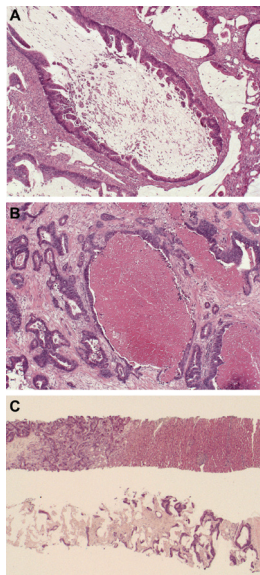


Figure 3 Photomicrograph of tumour samples used for performance evaluation study. (A) sample with extensive mucinosis; (B) sample with extensive necrosis; (C) sample from small core biopsy of metastatic colon adenocarcinoma in the liver. The core was divided lengthways before embedding and the total section area was 25 mm², the minimum specified in the protocol. The sample tested positive in both platforms without macrodissection and included solid adenocarcinoma (top left) normal liver (top right) and mucinous stroma (lower core).

mutation test panel include G12R, G13C, G13S, G13A, Q61P and Q61E. Samples that were anticipated to produce discordant results because of design differences in the Idylla and MassARRAY systems were classed as ‘discordant by design’ and were excluded from analysis.

Investigation of discordant results

Discordant results were further investigated by using droplet digital PCR as a second comparator test to evaluate the accuracy of the Idylla result. Droplet digital PCR was performed on a QX100TM system (Bio-Rad Laboratories, Hercules, California, USA) according to the instructions of the manufacturer.

RESULTS

Samples included

Two hundred and sixty-nine FFPE CRC samples were initially identified for the study (figure 2), and 242 samples included in the performance evaluation. Twenty-seven FFPE samples were excluded because they failed to meet the inclusion criteria. The most common reason for exclusion was insufficient sample quantity (n=11). One FFPE sample was excluded because it was classified as discordant by design. Seven samples resulted in a failed run, three of which were due to insufficient sample (assay failure) and four of which were due to instrument errors (system failure). This equates to assay and system failure rates of 1.24% and 1.74%, respectively. All invalid and error runs were successfully repeated and included in the agreement analysis as specified in the protocol. Samples included in the study ranged from blocks of tumour from resections (198) to small diagnostic core biopsies (44). Macrodissection was required in 126 samples. The proportions of tumour ranged from 20% to 60% in sections without macrodissection, and from 10% to 75% in sections requiring macrodissection.

Table 2 Baseline demographic and clinical characteristics for participants with valid test results

Gender	
Male	131 (54%)
Female	111 (46%)
Mean age (years) at tumour tissue collection date	67.6 (SD 10.96)
Histologically confirmed malignant colorectal cancer	242 (100%)
Tissue location	
Primary	220 (91%)
Metastatic (liver)	7 (3%)
Metastatic (other)	15 (6%)

The photomicrographs in figure 3 are from samples which show extensive mucinosis (A) extensive necrosis (B) and a small core biopsy (C). The Idylla NRAS-BRAF mutation test was able to detect mutations in all such samples.

Baseline demographic and clinical characteristics

The final study population demographics and clinical characteristics are presented in table 2. Gender representation was balanced between males and females (54% and 46%, respectively). The mean age at tumour collection was 67.6 years (range: 24–96 years). The majority of samples (91%) were of primary tumour tissues originating from the colon. The remaining samples were from metastatic deposits originated in the liver (3%) or another (6%) location. All samples were histologically confirmed as malignant CRC; 85% were *KRAS* WT, 15% had an *NRAS* mutation and 21% had a *BRAF* mutation.

Clinical performance of the Idylla NRAS-BRAF mutation test

The *NRAS* and *BRAF* mutational status of 242 retrospectively collected FFPE CRC samples was tested with the NRAS-BRAF mutation test. Results were compared with assessments made by the MassARRAY comparator reference test. Of the 242 FFPE samples analysed by the NRAS-BRAF Mutation Test, 36 tested positive for a mutation in *NRAS*, and in 205 cases, no *NRAS* mutation was found (table 3). As presented in table 4, results obtained by the NRAS-BRAF mutation test for *NRAS* testing were in agreement with the results obtained from the MassARRAY comparator reference test for 241 of 242 samples, resulting in an overall concordance of 99.59%, (lower bound of one-sided 95% CI=98.17%) with positive agreement of 100% (lower bound of one-sided 95% CI=93.0%) and a negative agreement of 99.51% (lower bound of one-sided 95% CI=97.85%).

Of the 242 FFPE samples, 52 tested positive for *BRAF* V600E/D mutation; no mutation was found in 190 cases. Results obtained by the NRAS-BRAF mutation test for *BRAF* testing were fully in agreement with the results obtained from the MassARRAY comparator reference test resulting in an overall concordance of 100% (lower bound of one-sided 95% CI=98.89%) (table 4).

Discordant result

In one case, a G12D *NRAS* mutation was detected by the NRAS-BRAF mutation test but not by the MassARRAY comparator reference test (tables 3 and 4). The *NRAS* G12D result was confirmed to be a true positive by ddPCR analysis with an allelic frequency of around 0.5%, which is well below the 5% limit of detection of the MassARRAY system (table 5).

Table 3 Mutation concordance analysis for the Idylla NRAS-BRAF mutation test for NRAS compared with MassARRAY. Table entries on the diagonal with orange shading are concordant results. The one discordant result, G12D with Idylla and WT with MassARRAY, is shaded light blue and discussed in the text

Idylla	MassARRAY													
	G1ZA	G12V	G12C	G12D	G12S	G13D	Q61H	Q61K	Q61L	G61R	A146TV	WT		
G12AV	1	4	0	0	0	0	0	0	0	0	0	0	0	
G12C	0	0	2	0	0	0	0	0	0	0	0	0	0	
G12D	0	0	0	11	0	0	0	0	0	0	0	1*	0	
G12S	0	0	0	0	0	0	0	0	0	0	0	0	0	
G13D	0	0	0	0	0	1	0	0	0	0	0	0	0	
Q61H	0	0	0	0	0	0	1	0	0	0	0	0	0	
Q61K	0	0	0	0	0	0	0	7	0	0	0	0	0	
Q61L	0	0	0	0	0	0	0	0	3	0	0	0	0	
G61R	0	0	0	0	0	0	0	0	0	6	0	0	0	
A146TV	0	0	0	0	0	0	0	0	0	0	0	0	0	
WT	0	0	0	0	0	0	0	0	0	0	0	0	205	

The orange entries on the diagonal highlight the correspondence between the MassARRAY and Idylla results. The one discordant result has a light blue background.

* ddPCR confirmed the G12D result (<5% allelic frequency).

WT, wild type.

DISCUSSION

The importance of testing for *NRAS* and *BRAF* mutations in tumours from patients with CRC is reflected in recent clinical practice recommendations of the American Society of Clinical Oncology²⁷ and the European Society for Medical Oncology.²⁸ *NRAS* mutations in colorectal tumours are associated with poor response to anti-EGFR therapy while *BRAF* mutations are associated with reduced survival.²⁹ Evidence-based guidelines therefore recommend *NRAS* (predictive) testing to guide treatment decisions and *BRAF* (prognostic) testing to provide information on outcomes.^{27 28}

The performance of the Idylla platform has been previously reported in various validation studies.^{23 24 30–33} In the present study, results from the Idylla *NRAS*-*BRAF* mutation test, which can detect 18 *NRAS* and five *BRAF* clinically relevant and actionable mutation targets, were compared with results obtained from *NRAS* and *BRAF* mutation testing by the MassARRAY.

There was greater than 99.5% concordance between the Idylla platform results and MassArray findings for *NRAS* and *BRAF* testing. Droplet digital PCR testing of the one discordant result confirmed the Idylla identification. One plausible explanation for this finding is that Idylla may have a lower limit of detection than the MassARRAY reference test; other possible explanations include test error and sample error.

Both the Idylla platform and MassARRAY methods were highly sensitive, and mutations could be reliably detected in small core biopsies and in samples with extensive mucinosis or necrosis.

As with other products based on similar technologies that identify specific mutations, mutations that are not intended to be detected will not be detected. However, these technologies in general, and the Idylla system, in particular, have the advantage of being able to readily update their assays to include mutations newly recognised as being clinically important, although revalidation for CE marking may be required.

In conclusion, the Idylla *NRAS*-*BRAF* mutation test is a fully automated and integrated real-time PCR-based test with high sensitivity and rapid turnaround time, providing results that are readily interpreted by clinicians. The Idylla platform proved straightforward to use with or without macrodissection. The method of handling the FFPE sections is distinct to Idylla and contrasts with the more usual method of placing the FFPE sections into a container. FFPE samples are loaded directly into single use cartridges with minimal sample preparation: histological sections (curls) for analysis are easily 'sandwiched' between the filter papers in the cassette. Potential drawbacks include the limited throughput (four samples per unit per day) and inability to retrieve samples and rescue an analysis if the system malfunctions mid-run. The Idylla platform would ideally be set up in a clean room close to where the paraffin sections are being prepared in a pathology laboratory and employed in clinical settings where the time saved by analysis on demand (compared with routine batch processing) would provide clinical and/or efficiency benefits. The Agena MassARRAY system can test from 1 to 384 samples on a chip (depending on the panels of tests and number of wells) and can process around 120 colorectal mutation tests per day.

Acknowledgements The authors thank Medical Research Council/Engineering and Physical Sciences Research Council Newcastle Molecular Pathology Node for providing the support for this study. We also thank the reviewers for their constructive comments.

Contributors Biocartis devised the project; LJ managed the project; TS and TM in Aarhus and AL in Newcastle located the CRC samples; Idylla and MassARRAY

Table 4 Idylla NRAS-BRAF mutation test results compared with the reference test (MassARRAY) results

(a) NRAS testing			
Idylla		MassARRAY	
		Mutation	No mutation
	Mutation	36	1
	No mutation	0	205
	Total	36	206
Idylla performance	Overall agreement	241/242 (99.59%, lower bound of one-sided 95% CI=98.17%)	
	Positive agreement	36/36 (100%, lower bound of one-sided 95% CI=93.0%)	
	Negative agreement	205/206 (99.51%, lower bound of one-sided 95% CI=97.85%)	
(b) BRAF testing			
Idylla		MassARRAY	
		Mutation <i>BRAF</i> c.1799T>A.p.(Val600Glu)	No mutation
	Mutation <i>BRAF</i> c.1799T>A.p. (Val600Glu)	52	0
	No mutation	0	190
	Total	52	190
Idylla performance	Overall agreement	242/242 (100%, lower bound of one-sided 95% CI=98.89%)	
	Positive agreement	52/52 (100%, lower bound of one-sided 95% CI=95.05%)	
	Negative agreement	190/190 (100%, lower bound of one-sided 95% CI=98.60%)	

Table 5 Discordant result between Idylla NRAS-BRAF mutation test and MassARRAY reference method

Sample no	Tissue	Age of block	No of FFPE tissue sections	Total tissue area (mm ²)	Tumour cells (%)	Macrodissection	Idylla NRAS result	Further analysis method	Further analysis and final classification
A050	Primary	<1 year	1	225	30	No	G12D	ddPCR	G12D (TP)

ddPCR, droplet digital PCR; NMD, no mutation detected; FFPE, formalin-fixed paraffin-embedded; FP, false positive; TP, true positive.

Take home messages

- Identification of mutations in *NRAS* and *BRAF* is important for treatment and prognosis in patients with colorectal cancer.
- The Idylla NRAS-BRAF mutation test is as accurate as the widely used Agena MassARRAY.
- The Idylla platform and Agena MassARRAY system are both highly configurable for low to high throughputs, but address different clinical and processing needs. The Idylla platform provides rapid analysis on demand, thus allowing pathology reports to integrate histology and mutation analysis, and treatment decisions to be made with minimum delay. The Agena MassARRAY system can process around 120 colorectal mutation tests per day.

testing was carried out by NewGene; LJ and MP performed the analyses; all authors contributed to the final manuscript.

Funding The Idylla system and cartridges were provided by Biocartis who funded the study.

Competing interests EV is employed by Biocartis. Agena Bioscience have provided training, assay reagents and supported conference attendance by NewGene staff (AS, BC, AJL, LL) during the 36 months prior to this publication. All other authors have no competing interest to declare.

Ethics approval National Research and Ethics Service (London—Bloomsbury Research and Ethics Committee, reference 16/LO/0509) and the Central Denmark Region Committees on Health Research Ethics.

Provenance and peer review Not commissioned; externally peer reviewed.

Data sharing statement No additional unpublished data are available for sharing.

Open Access This is an Open Access article distributed in accordance with the Creative Commons Attribution Non Commercial (CC BY-NC 4.0) license, which permits others to distribute, remix, adapt, build upon this work non-commercially, and license their derivative works on different terms, provided the original work is properly cited and the use is non-commercial. See: <http://creativecommons.org/licenses/by-nc/4.0/>

© Article author(s) (or their employer(s) unless otherwise stated in the text of the article) 2018. All rights reserved. No commercial use is permitted unless otherwise expressly granted.

REFERENCES

- 1 Prenen H, Tejpar S, Van Cutsem E. New strategies for treatment of KRAS mutant metastatic colorectal cancer. *Clin Cancer Res* 2010;16:2921–6.
- 2 Harari PM. Epidermal growth factor receptor inhibition strategies in oncology. *Endocr Relat Cancer* 2004;11:689–708.
- 3 Nicholson RI, Gee JM, Harper ME. EGFR and cancer prognosis. *Eur J Cancer* 2001;37(Suppl 4):9–15.
- 4 Siena S, Sartore-Bianchi A, Di Nicolantonio F, et al. Biomarkers predicting clinical outcome of epidermal growth factor receptor-targeted therapy in metastatic colorectal cancer. *J Natl Cancer Inst* 2009;101:1308–24.
- 5 Zenonos K, Kyprianou K. RAS signaling pathways, mutations and their role in colorectal cancer. *World J Gastrointest Oncol* 2013;5:97–101.
- 6 Soeda H, Shimodaira H, Gamoh M, et al. Phase II trial of cetuximab plus irinotecan for oxaliplatin- and irinotecan-based chemotherapy-refractory patients with advanced and/or metastatic colorectal cancer: evaluation of efficacy and safety based on KRAS mutation status (T-CORE0801). *Oncology* 2014;87:7–20.

- 7 Meyerhardt JA, Mayer RJ. Systemic therapy for colorectal cancer. *N Engl J Med* 2005;352:476–87.
- 8 Cunningham D, Humblet Y, Siena S, *et al.* Cetuximab monotherapy and cetuximab plus irinotecan in irinotecan-refractory metastatic colorectal cancer. *N Engl J Med* 2004;351:337–45.
- 9 Douillard JY, Siena S, Cassidy J, *et al.* Final results from PRIME: randomized phase III study of panitumumab with FOLFOX4 for first-line treatment of metastatic colorectal cancer. *Ann Oncol* 2014;25:1346–55.
- 10 Douillard JY, Siena S, Cassidy J, *et al.* Randomized, phase III trial of panitumumab with infusional fluorouracil, leucovorin, and oxaliplatin (FOLFOX4) versus FOLFOX4 alone as first-line treatment in patients with previously untreated metastatic colorectal cancer: the PRIME study. *J Clin Oncol* 2010;28:4697–705.
- 11 Er TK, Chen CC, Bujanda L, *et al.* Current approaches for predicting a lack of response to anti-EGFR therapy in KRAS wild-type patients. *Biomed Res Int* 2014;2014:591867.
- 12 Benvenuti S, Sartore-Bianchi A, Di Nicolantonio F, *et al.* Oncogenic activation of the RAS/RAF signaling pathway impairs the response of metastatic colorectal cancers to anti-epidermal growth factor receptor antibody therapies. *Cancer Res* 2007;67:2643–8.
- 13 Amado RG, Wolf M, Peeters M, *et al.* Wild-type KRAS is required for panitumumab efficacy in patients with metastatic colorectal cancer. *J Clin Oncol* 2008;26:1626–34.
- 14 Karapetis CS, Khambata-Ford S, Jonker DJ, *et al.* K-ras mutations and benefit from cetuximab in advanced colorectal cancer. *N Engl J Med* 2008;359:1757–65.
- 15 Van Cutsem E, Köhne CH, Hitre E, *et al.* Cetuximab and chemotherapy as initial treatment for metastatic colorectal cancer. *N Engl J Med* 2009;360:1408–17.
- 16 Malumbres M, Barbacid M: RAS oncogenes: the first 30 years. *Nat Rev Cancer* 2003;3:459–65.
- 17 Fearon ER. Molecular genetics of colorectal cancer. *Annu Rev Pathol* 2011;6:479–507.
- 18 Rajagopalan H, Bardelli A, Lengauer C, *et al.* Tumorigenesis: RAF/RAS oncogenes and mismatch-repair status. *Nature* 2002;418:934.
- 19 Oikonomou E, Koustas E, Goulielmaki M, *et al.* BRAF vs RAS oncogenes: are mutations of the same pathway equal? Differential signalling and therapeutic implications. *Oncotarget* 2014;5:11752–77.
- 20 Colling R, Wang LM, Soilleux E. Automated PCR detection of BRAF mutations in colorectal adenocarcinoma: a diagnostic test accuracy study. *J Clin Pathol* 2016;69:398–402.
- 21 de Biase D, de Luca C, Gragnano G, *et al.* Fully automated PCR detection of KRAS mutations on pancreatic endoscopic ultrasound fine-needle aspirates. *J Clin Pathol* 2016;986–91.
- 22 De Luca C, Gragnano G, Pisapia P, *et al.* EGFR mutation detection on lung cancer cytological specimens by the novel fully automated PCR-based Idylla EGFR Mutation Assay. *J Clin Pathol* 2017;70:295–300.
- 23 Janku F, Claes B, Huang HJ, *et al.* BRAF mutation testing with a rapid, fully integrated molecular diagnostics system. *Oncotarget* 2015;6:26886–94.
- 24 Melchior L, Grauslund M, Bellosillo B, *et al.* Multi-center evaluation of the novel fully-automated PCR-based Idylla™ BRAF Mutation Test on formalin-fixed paraffin-embedded tissue of malignant melanoma. *Exp Mol Pathol* 2015;99:485–91.
- 25 Schiefer AI, Parlow L, Gabler L, *et al.* Multicenter Evaluation of a Novel Automated Rapid Detection System of BRAF Status in Formalin-Fixed, Paraffin-Embedded Tissues. *J Mol Diagn* 2016;18:370–7.
- 26 Yeo M-K, Jung M-K, Lee S-Y, *et al.* The usefulness of a novel fully automated PCR-based Idylla test for detection of the BRAF V600E mutation in thyroid tissue: comparison with PNA-clamping PCR, real-time PCR and pyrosequencing. *J Clin Pathol* 2017;70:260–5.
- 27 Allegra CJ, Rumble RB, Hamilton SR, *et al.* Extended RAS Gene Mutation Testing in Metastatic Colorectal Carcinoma to Predict Response to Anti-Epidermal Growth Factor Receptor Monoclonal Antibody Therapy: American Society of Clinical Oncology Provisional Clinical Opinion Update 2015. *J Clin Oncol* 2016;34:179–85.
- 28 Van Cutsem E, Cervantes A, Adam R, *et al.* ESMO consensus guidelines for the management of patients with metastatic colorectal cancer. *Ann Oncol* 2016;27:1386–422.
- 29 Hsu HC, Thiam TK, Lu YJ, *et al.* Mutations of KRAS/ NRAS/ BRAF predict cetuximab resistance in metastatic colorectal cancer patients. *Oncotarget* 2016;7:22257–70.
- 30 Solassol J, Vendrell J, Märkl B, *et al.* Multi-Center Evaluation of the Fully Automated PCR-Based Idylla™ KRAS Mutation Assay for Rapid KRAS Mutation Status Determination on Formalin-Fixed Paraffin-Embedded Tissue of Human Colorectal Cancer. *PLoS One* 2016;11:e0163444.
- 31 Weyn C, Van Raemdonck S, Dendooven R, *et al.* Clinical performance evaluation of a sensitive, rapid low-throughput test for KRAS mutation analysis using formalin-fixed, paraffin-embedded tissue samples. *BMC Cancer* 2017;17:139.
- 32 Colling R, Wang LM, Soilleux E. Validating a fully automated real-time PCR-based system for use in the molecular diagnostic analysis of colorectal carcinoma: a comparison with NGS and IHC. *J Clin Pathol* 2017;70:610–4.
- 33 Yeo MK, Jung MK, Lee SY, *et al.* The usefulness of a novel fully automated PCR-based Idylla test for detection of the BRAF V600E mutation in thyroid tissue: comparison with PNA-clamping PCR, real-time PCR and pyrosequencing. *J Clin Pathol* 2017;70:260–5.



Clinical performance evaluation of the Idylla NRAS-BRAF mutation test on retrospectively collected formalin-fixed paraffin-embedded colorectal cancer tissue

Louise Johnston, Michael Power, Philip Sloan, Anna Long, Angela Silmon, Ben Chaffey, Andrea Jane Lisgo, Liam Little, Ellen Vercauteren, Torben Steiniche, Tine Meyer and John Simpson

J Clin Pathol 2018 71: 336-343 originally published online September 12, 2017

doi: 10.1136/jclinpath-2017-204629

Updated information and services can be found at:
<http://jcp.bmj.com/content/71/4/336>

These include:

References

This article cites 32 articles, 11 of which you can access for free at:
<http://jcp.bmj.com/content/71/4/336#ref-list-1>

Open Access

This is an Open Access article distributed in accordance with the Creative Commons Attribution Non Commercial (CC BY-NC 4.0) license, which permits others to distribute, remix, adapt, build upon this work non-commercially, and license their derivative works on different terms, provided the original work is properly cited and the use is non-commercial. See: <http://creativecommons.org/licenses/by-nc/4.0/>

Email alerting service

Receive free email alerts when new articles cite this article. Sign up in the box at the top right corner of the online article.

Topic Collections

Articles on similar topics can be found in the following collections

[Open access](#) (129)

Notes

To request permissions go to:
<http://group.bmj.com/group/rights-licensing/permissions>

To order reprints go to:
<http://journals.bmj.com/cgi/reprintform>

To subscribe to BMJ go to:
<http://group.bmj.com/subscribe/>