

BMJ Open National Early Warning Scores and COVID-19 deaths in care homes: an ecological time-series study

Daniel Stow , Robert O Barker, Fiona E Matthews, Barbara Hanratty 

To cite: Stow D, Barker RO, Matthews FE, *et al.* National Early Warning Scores and COVID-19 deaths in care homes: an ecological time-series study. *BMJ Open* 2021;**11**:e045579. doi:10.1136/bmjopen-2020-045579

► Prepublication history and additional supplemental material for this paper are available online. To view these files, please visit the journal online (<http://dx.doi.org/10.1136/bmjopen-2020-045579>).

Received 06 October 2020
Accepted 30 July 2021



© Author(s) (or their employer(s)) 2021. Re-use permitted under CC BY. Published by BMJ.

Population and Health Sciences Institute, Newcastle University, Newcastle upon Tyne, UK

Correspondence to

Daniel Stow;
daniel.stow@ncl.ac.uk

ABSTRACT

Objectives To investigate whether National Early Warning Scores (NEWS/NEWS2) could contribute to COVID-19 surveillance in care homes.

Setting 460 care home units using the same software package to collect data on residents, from 46 local authority areas in England.

Participants 6464 care home residents with at least one NEWS recording.

Exposure measure 29 656 anonymised person-level NEWS from 29 December 2019 to 20 May 2020 with component physiological measures: systolic blood pressure, respiratory rate, pulse rate, temperature and oxygen saturation. Baseline values for each measure calculated using 80th and 20th centile scores before March 2020.

Outcome measure Cross-correlation comparison of time series with Office for National Statistics weekly reported registered deaths of care home residents where COVID-19 was the underlying cause of death, and all other deaths (excluding COVID-19) up to 10 May 2020.

Results Deaths due to COVID-19 were registered from 23 March 2020 in the local authority areas represented in the study. Between 23 March 2020 and 10 May 2020, there were 5753 deaths (1532 involving COVID-19 and 4221 other causes). We observed a rise in the proportion of above-baseline NEWS beginning 16 March 2020, followed 2 weeks later by an increase in registered deaths (cross-correlation of $r=0.82$, $p<0.05$ for a 2 week lag) in corresponding local authorities. The proportion of above-baseline oxygen saturation, respiratory rate and temperature measurements also increased approximately 2 weeks before peaks in deaths.

Conclusions NEWS could contribute to COVID-19 disease surveillance in care homes during the pandemic. Oxygen saturation, respiratory rate and temperature could be prioritised as they appear to signal rise in mortality almost as well as NEWS. This study reinforces the need to collate data from care homes, to monitor and protect residents' health. Further work using individual level outcome data is needed to evaluate the role of NEWS in the early detection of resident illness.

INTRODUCTION

Care homes have experienced high rates of COVID-19 infection and death. In England, over half of excess mortality in the first months of 2020 is estimated to have been

Strengths and limitations of this study

- This is one of the few studies providing population level surveillance information on the care home population during the initial peak of infections from COVID-19.
- This study uses widely available public health mortality information, combined with individual level health observations based on vital sign measurements (National Early Warning Scores), that could be useful for population-level COVID-19 disease surveillance during future waves of COVID-19 infection in care homes.
- The ecological study design was used as a pragmatic approach to make best use of available data: but this is not a causal study, nor a study of diagnostic accuracy, and it is liable to the ecological fallacy.
- Further research using individual level information on mortality and diagnoses, linked to NEWS, is required to evaluate the role of NEWS in assessing individual residents with suspected COVID-19 infection.

in this setting.¹ Surveillance of COVID-19 in care homes has been difficult, because of a paucity of testing, and the lack of experience with how this disease presents in older people.²

An increasing number of UK care homes now collect National Early Warning Score (NEWS). This tool (originally developed by the Royal College of Physicians in 2012,³ and updated in 2017)⁴ is used in hospitals in the UK to identify patients at risk of acute deterioration and improve patient safety. NEWS requires the measurement of six simple physiological parameters: temperature, pulse, systolic blood pressure, respiratory rate and oxygen saturation and level of consciousness or new confusion. The score generated should trigger a prespecified response, ranging from repeating the score within a specific timeframe, to seeking urgent medical attention.⁵

The British Geriatrics Society produced guidelines for managing COVID-19 in care

homes for older people. To support triage, they recommend training staff to measure a resident's vital signs (temperature, blood pressure, heart rate, pulse oximetry and respiratory rate) when COVID-19 infection is suspected.⁶ The risks and benefits of this approach are unknown. In community settings, elevated NEWS scores have been associated with prompt review by a health professional and poor health outcomes.⁷ Evidence to support the use of NEWS in care homes is limited, and whether it can support care home staff to identify or predict deterioration in the health of residents is unclear.⁸⁻¹¹ NEWS observations, particularly measurement of blood pressure, require close contact between residents and care home workers, which may transmit COVID-19 infection.

This study will address the dearth of published evidence on the use of NEWS in any setting during the COVID-19 pandemic.¹² The aim is to describe change in NEWS and its components over time and align these data with COVID-19 and all-cause mortality in care homes in England. We address the question of whether NEWS can contribute to surveillance during the pandemic, and whether an abbreviated NEWS (excluding one or more of the component measures) would suffice.

METHODS

Study design and setting

We conducted an ecological study by aggregating individual level data for the exposure of interest (NEWS) and comparing these results to area level aggregate data for the outcome of interest (all cause and COVID-19 mortality). Participants were all residents of care homes utilising the same commercial software with cloud storage of data, and they all had at least one NEWS recording.¹³ We did not apply any further population inclusion/exclusion criteria.

Exposure information

Anonymised person-level NEWS (and the slightly modified NEWS2)⁴ information were obtained from 1 December 2019 to 20 May 2020 including the individual component vital sign measures of NEWS: blood pressure, respiratory rate, pulse rate, temperature and oxygen saturation. Demographic information on the care home resident (age and sex) were obtained, along with a geographical identifier to examine regional variation. NEWS recordings were made by care home staff using a specific, commercially available package designed to reduce measurement error. The commercial provider supplies equipment to measure vital signs and record physiological observations, automatically generate NEWS, and upload the data to their cloud storage servers. The system has previously been described elsewhere.¹¹

Outcome measurement

Geographical death data were obtained from Office for National Statistics (ONS) weekly reported registered

deaths in care homes due to COVID-19, and all cause deaths (excluding COVID-19) available from week 1 (beginning 29 December 2019), to week 19 (ending 10 May 2020).¹⁴ ONS reporting areas and care home geographical labels were mapped as closely as possible.

Analysis

We established baseline levels for NEWS and its component observations, in our population using centile cut points in a random subset of 70% of data collected between December 2019 and 1 March 2020 (prior to the likely outbreak of COVID-19 in care homes in England). These cut points were then validated in the remaining 30% of observations made before March 2020. NEWS scores above the 80th centile score were defined as above-baseline. For individual physiological observations, upper and lower thresholds were established using the 80th and 20th centile measurements in the same random subset (we calculated the lowest 20th centile only for oxygen saturation: only lower values indicate a health problem). These cut points represent markers of increase in each parameter at a population level and are not measures of clinical concern at the individual resident level, which are defined elsewhere.⁴ We removed biologically implausible values from the data set before creating the centile cut points (online supplemental table 1). We used quantile regression to measure the impact of age and sex on centile scores but did not find evidence to support age/sex specific 20th and 80th centile cut points in this population (details available from the authors on request).

We calculated the proportion of above-baseline NEWS measurements and the component observations on a weekly basis, aggregated across all geographical areas providing data. We plotted the proportion of weekly above-baseline measures in participating care homes as a time series against the weekly number of care home deaths due to COVID-19 and all-cause mortality (excluding COVID-19) occurring in the matched geographical areas present in our data.

We calculated the cross-correlation between the two time series (above-baseline NEWS and component scores, and daily registered all cause deaths including COVID-19) for time lags between 0 and 7 weeks. We combined the individual physiological observations that anticipated COVID-19 mortality trends to see if a 'minimum panel' could be useful for collection instead of the full NEWS panel. This makes our findings relevant to care home settings where NEWS is not calculated, or where all component physiological measures are not performed. Measurement of fewer components is expected to reduce contact time between carers and residents and decrease spread of COVID-19 infection.

All data management and analyses were conducted using R V.3.6.3.¹⁵ We used the ccf function in the stats R package to calculate cross-correlations.

Patient and public involvement

This was a study in response to a Public Health Emergency of International Concern. Patients or the public were not involved in the design, conduct or reporting of this rapid response research.

RESULTS

Care home population

Care home data were available from 6464 individuals, 2007 men (mean age 80.1 years, SD=12.6) and 3373 women (mean age 83.0 years, SD=12.9). Information on gender was missing from 1086 (16.8%) people, and age information was missing for 116 (1.8%) people. 441 biologically implausible NEWS component scores were removed from the dataset (online supplemental table 1).

Geographical variation in reporting

29 656 NEWS recordings were made across 46 local authority (LA) areas, from 480 unique care home IDs (identifiers for the device used to record the measurement, representing a care home or a distinct unit within a care home). Most recordings were made in two LAs in the north east of England (n=11 029 and n=10 347), and in one London borough (n=3411).

Deaths in care homes

There were 10 407 registered deaths in care homes in the 46 LA and Clinical Commissioning Group (CCG) areas between 29 December 2019 and 10 May 2020. The first death from COVID-19 was registered in week commencing 23 March 2020. From 23 March 2020 to 10 May 2020, there were 5753 deaths of care home residents—1532 with an underlying cause of COVID-19 and 4221 due to causes excluding COVID-19.

Baseline news centile scores

Table 1 contains information on NEWS taken from 9586 (70% subset of 13 694) recordings made before 1 March 2020. Table 1 also contains thresholds for NEWS 20th centile scores, and 80th and 20th centile scores for NEWS components calculated in this subset, and the proportion

of observations exceeding these values in the 30% validation dataset.

NEWS measurements and care home deaths

The proportion of above baseline NEWS observations was stable from week 1 (30 December 2019–5 January 2020) until week 12 (16 March 2020 to 22 March 2020) and week 13 (23 March 2020 to 29 March 2020) when there was a marked increase. This increase happened in the weeks before the majority of COVID-19 and non-COVID-19 deaths began to occur (from week 15 (6 April to 12 April)). The proportion of above baseline NEWS scores peaked in week 15, before beginning to decline again from week 16 (13 April to 19 April) onwards (figure 1). The highest correlation was observed for a 2 week lag ($r=0.82$, $p\leq 0.05$, online supplemental figure 1).

Individual NEWS component measures and care home deaths

The proportion of above baseline measures of high respiratory rate ($r=0.73$, $p\leq 0.05$ for a 2 week lag) and low oxygen saturation ($r=0.80$, $p\leq 0.05$ for a 2 week lag) appear to follow the pattern of COVID-19 and non-COVID-19 deaths more closely than other component measures (online supplemental figure 1). The proportion of above baseline measures of temperature appeared to be decreasing between week 0 and week 10, before rising slightly to plateau until week 15 before declining again.

Combination of NEWS component measures

Figure 2 shows paired combinations of above baseline respiratory rate and temperature and below baseline oxygen saturation. All increase just before peaks in COVID-19 and non COVID-19 deaths (figure 2).

DISCUSSION

This study suggests that NEWS could make a useful contribution to COVID-19 disease surveillance in care homes during the pandemic. A rise in the proportion of above-baseline NEWS was observed from the middle of March 2020, when the incidence of COVID-19 was believed to be rising in the UK. The proportion of above-baseline

Table 1 NEWS values before March 2020 in the development data set, cut points for baseline measurements and proportion of above baseline measurements in the validation data set

Measurement	Development data set						Validation data set	
	Median	Min	Max	IQR	20th centile	80th centile	% below 20th centile	% above 80th centile
NEWS	2.0	0.0	15.0	3.0		>4		14.7
Temperature (°C)	36.5	32.0	40.0	0.6	<36.2	≥36.9	18.4	25.8
Pulse rate (beats/min)	76.0	22.0	212.0	19.0	<66	≥89	19.6	20.0
Systolic BP (mm Hg)	123.0	50.0	235.0	26.0	<109	≥143	20.5	19.4
Respiratory rate (breaths/min)	19.0	6.0	60.0	3.0	<17	≥22	19.4	18.3
Oxygen saturation (%)	95.0	47.0	100.0	4.0	≤92		17.6	

BP, blood pressure; NEWS, National Early Warning Scores.

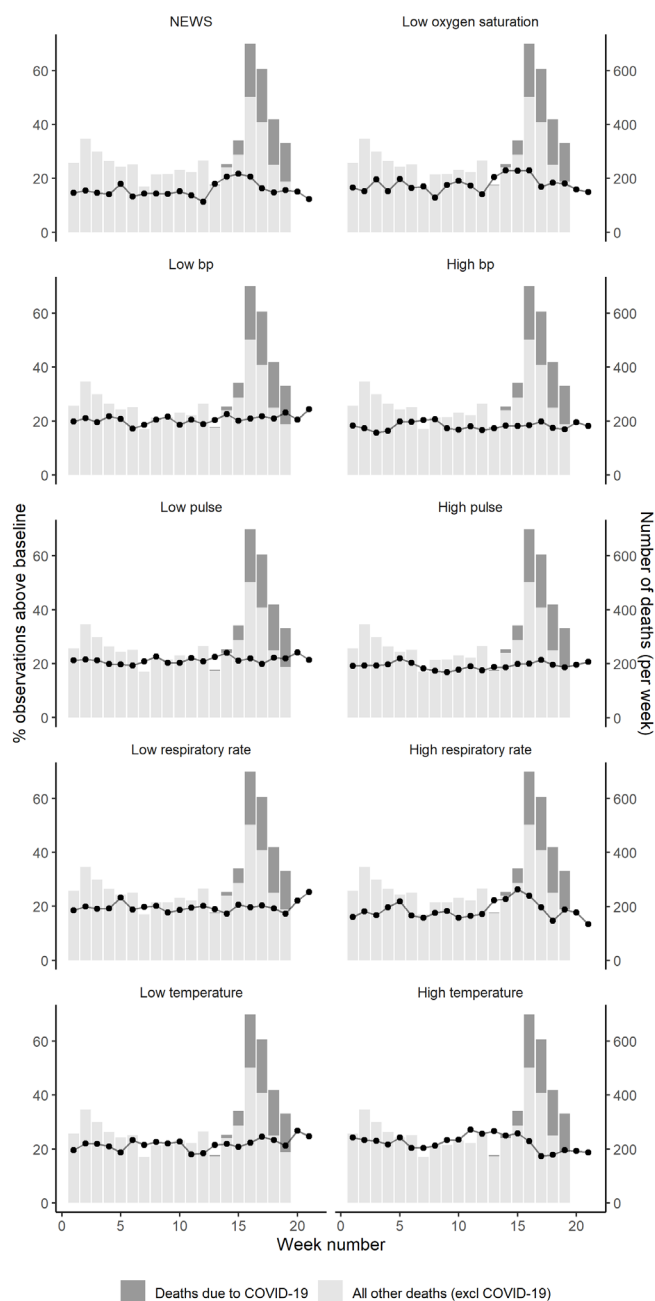


Figure 1 The proportion of above baseline NEWS and component measurements from December 2019 to May 2020 (lines), compared with care home deaths in corresponding geographical areas in England (bars). NEWS, National Early Warning Scores.

measurements of oxygen saturation, respiratory rate and temperature also increased approximately 2 weeks before peaks in care home deaths in corresponding geographical areas. Oxygen saturation and respiratory rate appear to signal rise in mortality almost as well as total NEWS and may be safer and more practical to measure during a pandemic.

In this study, we observed a 2-week time lag between peaks in NEWS measures and deaths. This is similar to the observed time between symptom onset and

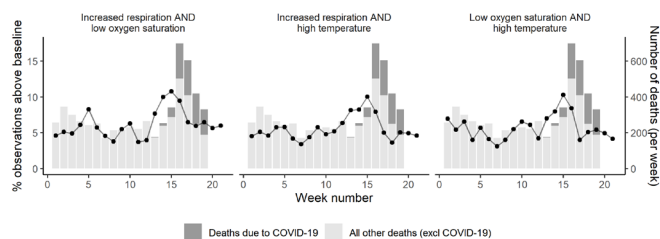


Figure 2 The proportion of above baseline NEWS component combinations December 2019 to May 2020, compared with care home deaths in corresponding geographical areas in England. NEWS, National Early Warning Scores.

COVID-19 death in other settings.^{16 17} Evidence for the role of NEWS in acute illness in community settings is growing,^{11 18–22} but to date, only one descriptive study has provided empirical data on NEWS in care homes.⁸ A recent systematic review on the use of NEWS in assessing unwell COVID-19 patients in primary care suggested that enthusiasm for its use may be premature.¹² Limitations of this study mean that we cannot draw direct conclusions about the role of NEWS (or its component parameters) in the care of individual residents: further study would be needed to address this question. However, it suggests a role for NEWS in COVID-19 disease surveillance at a care home population level in the pandemic. Measurement and monitoring of some NEWS components may be useful in detecting future waves of COVID-19 infection in care homes. Emerging evidence suggests that up to half of care home residents do not have symptoms at the time they test positive for COVID-19.²³ Whether NEWS measurement could signal impending illness in any of these residents at the individual level is unclear, and we do not believe it should substitute for a comprehensive programme of testing in care homes. Recent work has shown the value of routinely collected information to target resources during the COVID-19 pandemic,²⁴ and our study strengthens the case for further work to evaluate the role of NEWS in the care of individual residents.

Strengths and limitations

To the best of our knowledge, this is the first study to examine variation in NEWS in care homes over time. We have described trends over time in NEWS recorded using a specific software system used to collect data on NEWS in some care homes. This means that the distribution of care homes within and between areas is not systematic, as it reflects the market share of the software company and local support for digital data collection in care homes. Most recordings were drawn from the north east of England, and a London borough, but we have no information on the proportion of care home residents in each area that are represented in our data set. All data were anonymised, and without individual outcome data, we examined patterns in and simple correlations between NEWS and area-level weekly registered death information. We were not able to independently assess or verify

the accuracy of NEWS measurements made by care home staff using the specific commercial software, and acknowledge that even where training is sufficient, the accuracy of vital sign measurement such as respiratory rate can be suboptimal.²⁵ However, our approach using 20th/80th centile scores will have ameliorated some of the impact of potential inaccuracies, and we caution against using single observations in isolation. Furthermore, we removed a small number of biologically implausible values and provide a summary of the number of values removed in online supplemental table 1. This study design was a pragmatic approach that made best use of available data, but it is not a causal study, nor a study of diagnostic accuracy and it is liable to the ecological fallacy.

CONCLUSIONS

The recording of the NEWS, and the component physiological measures, may make a useful contribution to COVID-19 disease surveillance during the pandemic. Use of a shortened NEWS could be recommended for care home population surveillance where COVID-19 is of primary concern (but not for individual care due to the risk of underestimating the severity of non-respiratory illness). Oxygen saturation, respiratory rate and temperature provide a similar signal to the complete NEWS. The omission of some components of NEWS, such as blood pressure, minimises contact time between residents and care home staff, potentially reducing infection risk where this is of primary concern. Data on mortality and diagnoses, linked to NEWS, are required to evaluate the role of NEWS in assessing individual residents with suspected COVID-19 infection. Collection and aggregation of data from care homes would facilitate disease surveillance; we argue that introduction of a care home minimum dataset should be a priority for the UK.

Acknowledgements We are grateful to Solcom (Wyman), who provided the anonymised NEWS information used in this study, the care home staff who collected the data, and the North East and North Cumbria Academic Health Science Network who support digital data collection in north east care homes.

Contributors BH and ROB conceived the study. BH, ROB and DS acquired and managed the data. DS analysed the data and created the figures. DS, ROB, FEM and BH interpreted the results. DS, BH and ROB drafted the first version of the manuscript. BH and FEM supervised the work. DS is the guarantor and accepts full responsibility for the work and the conduct of the study, had access to the data and controlled the decision to publish. All coauthors provided critical comments and approved the final version of the manuscript. The corresponding author attests that all listed authors meet authorship criteria and that no others meeting the criteria have been omitted.

Funding DS is funded by the NIHR School for Primary Care Research (Launching Fellowship SPGR-PDF-2020-161), ROB by an NIHR In Practice Fellowship (IPF-2018-12-010). BH is supported by the NIHR North East and North Cumbria Applied Research Collaboration. BH and FEM are funded by the NIHR Policy Research Unit: Older People and Frailty (PR-PRU-1217-21502). This paper presents independent research funded by the National Institute for Health Research. The views expressed are those of the author(s) and not necessarily those of the NHS, the NIHR or the Department of Health and Social Care.

Competing interests None declared.

Patient consent for publication Not required.

Ethics approval This study was approved by Newcastle University Research Ethics Committee (Ref. 3297/2020) and was conducted under the Secretary of State's directions under the Control of Patient Information Regulations, following advice from the Health Research Authority.

Provenance and peer review Not commissioned; externally peer reviewed.

Data availability statement Data are available in a public, open access repository. Data are available upon reasonable request. Information on the deaths of care home residents is freely available from the source cited (<https://www.ons.gov.uk/peoplepopulationandcommunity/birthsdeathsandmarriages/deaths/articles/deathsinvolvingcovid19inthecaresectorenglandandwales/deathsoccurringupto1may2020andregisteredupto9may2020provisional>). Other data may be available upon reasonable request from barbara.hanratty@newcastle.ac.uk.

Supplemental material This content has been supplied by the author(s). It has not been vetted by BMJ Publishing Group Limited (BMJ) and may not have been peer-reviewed. Any opinions or recommendations discussed are solely those of the author(s) and are not endorsed by BMJ. BMJ disclaims all liability and responsibility arising from any reliance placed on the content. Where the content includes any translated material, BMJ does not warrant the accuracy and reliability of the translations (including but not limited to local regulations, clinical guidelines, terminology, drug names and drug dosages), and is not responsible for any error and/or omissions arising from translation and adaptation or otherwise.

Open access This is an open access article distributed in accordance with the Creative Commons Attribution 4.0 Unported (CC BY 4.0) license, which permits others to copy, redistribute, remix, transform and build upon this work for any purpose, provided the original work is properly cited, a link to the licence is given, and indication of whether changes were made. See: <https://creativecommons.org/licenses/by/4.0/>.

ORCID iDs

Daniel Stow <http://orcid.org/0000-0002-9534-4521>

Barbara Hanratty <http://orcid.org/0000-0002-3122-7190>

REFERENCES

- Comas-Herrera A, Fernandez J-L. England: estimates of mortality of care home residents linked to the COVID-19 pandemic. International long-term care policy network, 2020. Available: <https://itccovid.org/2020/05/12/estimates-of-mortality-of-care-home-residents-linked-to-the-covid-19-pandemic-in-england/> [Accessed 19 May 2020].
- Tay HS, Harwood R. Atypical presentation of COVID-19 in a frail older person. *Age Ageing* 2020;49:523-4.
- Royal College of Physicians. *National early warning score (news) standardising the assessment of acute-illness severity in the NHS*. London: Royal College of Physicians, 2012. <https://www.rcplondon.ac.uk/projects/outputs/national-early-warning-score-news-2>
- Royal College of Physicians. *National early warning score (NEWS2) standardising the assessment of acute-illness severity in the NHS*. London: Royal College of Physicians, 2017. <https://www.rcplondon.ac.uk/projects/outputs/national-early-warning-score-news-2>
- Royal College of Physicians. National Early Warning Score (NEWS) 2, 2020. Available: <https://www.rcplondon.ac.uk/projects/outputs/national-early-warning-score-news-2> [Accessed 26 May 2020].
- British Geriatrics Society. COVID-19: managing the COVID-19 pandemic in care homes for older people: good practice guide, 2020. Available: https://www.bgs.org.uk/resources/covid-19-managing-the-covid-19-pandemic-in-care-homes#_edn5 [Accessed 30 Apr 2020].
- Scott LJ, Redmond NM, Tavaré A, *et al*. Association between national early warning scores in primary care and clinical outcomes: an observational study in UK primary and secondary care. *Br J Gen Pract* 2020;70:e374-80.
- Barker RO, Stocker R, Russell S, *et al*. Distribution of the National early warning score (news) in care home residents. *Age Ageing* 2019;49:141-5.
- Hodge S, Thompson C, Gordon AL. National early warning scores in care homes: do policy imperatives reflect a genuine need? *Age Ageing* 2019;49:5-6.
- Smith GB, Prytherch DR, Schmidt PE, *et al*. Should age be included as a component of track and trigger systems used to identify sick adult patients? *Resuscitation* 2008;78:109-15.
- Russell S, Stocker R, Barker RO, *et al*. Implementation of the National early warning score in UK care homes: a qualitative evaluation. *Br J Gen Pract* 2020;70:e793-800.



- 12 Greenhalgh T, Treadwell J, Burrow R. News (or NEWS2) score when assessing possible COVID-19 patients in primary care? Oxford: the centre for evidence-based medicine, 2020. Available: <https://www.cebm.net/covid-19/should-we-use-the-news-or-news2-score-when-assessing-patients-with-possible-covid-19-in-primary-care/> [Accessed 21 May 2020].
- 13 Whzan Digital Health. Early warning health detection systems, 2020. Available: <https://www.whzan.uk/> [Accessed 20 May 2020].
- 14 Office of National Statistics. Deaths involving COVID-19 in the care sector, England and Wales: deaths occurring up to 1 may 2020 and registered up to 9 may 2020 (provisional): ONS, 2020. Available: <https://www.ons.gov.uk/peoplepopulationandcommunity/birthsdeathsandmarriages/deaths/articles/deathsinvolvingcovid19inthecaresectorenglandandwales/deathsoccurringupto1may2020andregisteredupto9may2020provisional> [Accessed 18 May 2020].
- 15 R Core Team. *R: a language and environment for statistical computing*. Vienna, Austria: R Foundation for Statistical Computing, 2020.
- 16 Chen T, Wu D, Chen H, *et al*. Clinical characteristics of 113 deceased patients with coronavirus disease 2019: retrospective study. *BMJ* 2020;368:m1091.
- 17 Verity R, Okell LC, Dorigatti I, *et al*. Estimates of the severity of coronavirus disease 2019: a model-based analysis. *Lancet Infect Dis* 2020;20:669–77.
- 18 Finnikin S, Hayward G, Wilson F, *et al*. Are referrals to hospital from out-of-hours primary care associated with national early warning scores? *Emerg Med J* 2020;37:279–85.
- 19 Scott LJ, Redmond NM, Garrett J, *et al*. Distributions of the National early warning score (news) across a healthcare system following a large-scale roll-out. *Emerg Med J* 2019;36:287–92.
- 20 Brangan E, Banks J, Brant H, *et al*. Using the National early warning score (news) outside acute hospital settings: a qualitative study of staff experiences in the West of England. *BMJ Open* 2018;8:e022528.
- 21 Silcock DJ, Corfield AR, Gowens PA, *et al*. Validation of the National early warning score in the prehospital setting. *Resuscitation* 2015;89:31–5.
- 22 Inada-Kim M, Knight T, Sullivan M, *et al*. The prognostic value of national early warning scores (news) during transfer of care from community settings to hospital: a retrospective service evaluation. *BJGP Open* 2020;4:bjgpopen20X101071.
- 23 Graham NSN, Junghans C, Downes R, *et al*. SARS-CoV-2 infection, clinical features and outcome of COVID-19 in United Kingdom nursing homes. *J Infect* 2020;81:2020.05.19.20105460.
- 24 Thornton J. The "virtual wards" supporting patients with covid-19 in the community. *BMJ* 2020;369:m2119.
- 25 Latten GHP, Spek M, Muris JWM, *et al*. Accuracy and interobserver-agreement of respiratory rate measurements by healthcare professionals, and its effect on the outcomes of clinical prediction/ diagnostic rules. *PLoS One* 2019;14:e0223155.